

Plunger Pumps

FEATURING

MANIFOLD: High strength forged brass for long term use.

BOLTS: Six 6mm grade 12.9.

PLUNGERS: A special thick solid ceramic for long life, strong durability and more resilience.

CRANKCASE: Precision die-cast, large cooling fins and anodized for maximum heat dissipation. Sight glass, fill and drain plugs.

BEARINGS: Oversized for maximum life and load disbursement, two ball bearings. Each bearing is held in position on the crankshaft and crankcase by snap rings. This assures positive alignment and centering of the connecting rods and crankshaft in relation to the crankcase, it also eliminates the crankshaft from floating.

VALVES, SEATS, AND SPRINGS: Stainless steel with specially designed Ultra Form material valve cages that are impervious to water absorption and provide long life and positive seating.

SEALS AND V-PACKINGS: Continuously lubricating for extended life.

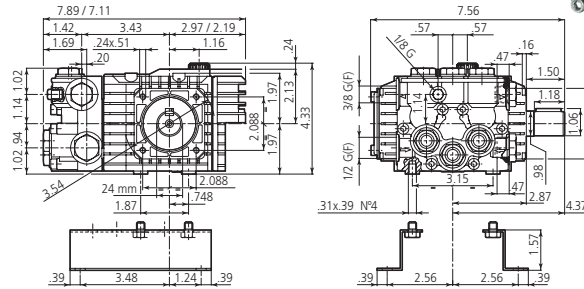
PLUNGER RODS: High strength stainless steel.

CONNECTING RODS: One piece special alloy aluminum based and bronze (+1800 PSI) oversized for maximum strength, load disbursement, and long life. Heavy pin area construction, for added load strength.

DIMENSIONS

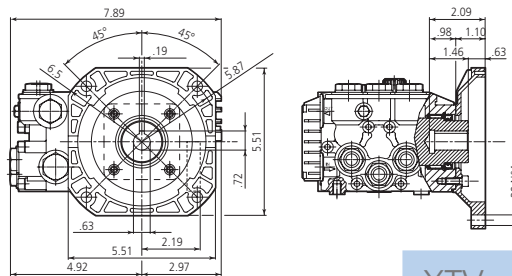
XTV

N version
Solid shaft pump ø 24 mm



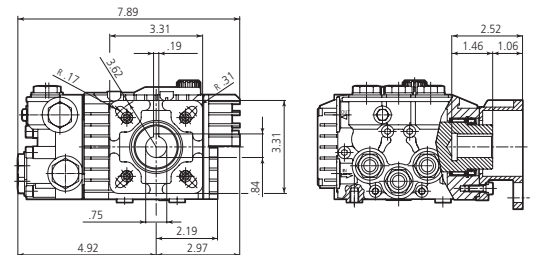
XTV

E version + F8
Hollow shaft pump ø 5/8"



XTV

D version + F7
Hollow shaft pump ø 3/4"



SPECIFICATIONS

MODEL	MAX GPM	MAX LMP	MAX PSI	MAX BAR	POWER EBHP	BORE DIA MM	STROKE MM	CRANKSHAFT ID STAMP	WEIGHT LBS.
XTV3G22N	3.0	11.4	2200	150	4.5	15	7.2	C	11
XTV0.5G10E-F8	0.5	1.9	1000	69	0.4	15	2.2	Z	8.5
XTV2G15EBA-F8	2.11	8.0	1500	103	2.0	15	4.8	D	10
XTV2G22E-F8	2.11	8.0	2200	150	3.0	15	4.8	D	11
XTV3G16E-F8	3.0	11.4	1600	110	3.0	15	7.2	C	10
XTV3G22E-F8	3.0	11.4	2200	150	4.5	15	7.2	C	11
XTV2G15DBA-F7	2.11	8.0	1500	103	2.0	15	4.8	D	10
XTV2G22D-F7	2.11	8.0	2200	150	3.0	15	4.8	D	10
XTV3G16D-F7	3.0	11.4	1600	110	3.0	15	7.2	C	10
XTV3G22D-F7	3.0	11.4	2200	150	4.5	15	7.2	C	11

PSI ≤ 1740 = Oil Capacity = 8 oz Maximum Fluid Temperature = 140° F
 PSI ≥ 1740 = Oil Capacity = 10 oz Maximum Fluid Temperature = 140° F

Inlet Thread = 1/2" F Discharge Thread = 3/8" F
 Inlet Thread = 1/2" F Discharge Thread = 3/8" F

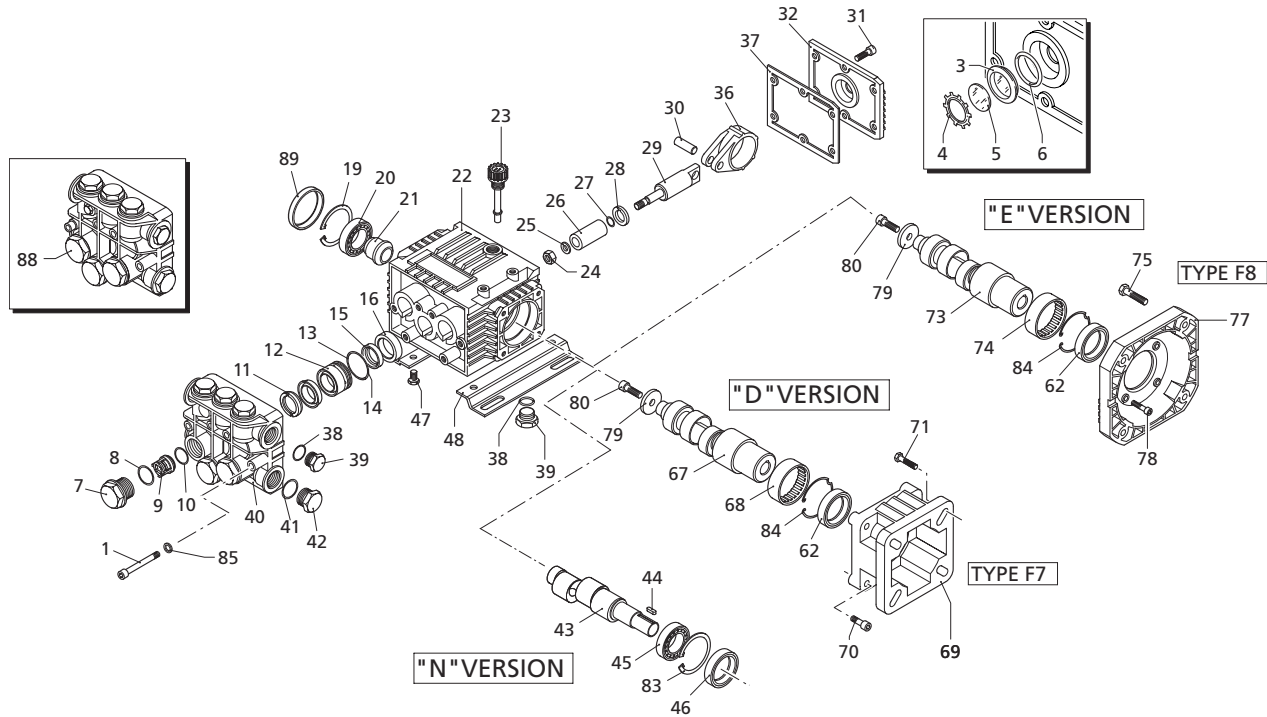
Torque Specifications Inch pounds (ft. lbs)

	HEAD	PISTON NUT	REAR COVER	SIDE COVER	VALVE CAP	CON RODS
PSI ≤ 1740	89 (7.5)	106 (8.8)	48 (4.0)	N/A	300 (25)	N/A
PSI ≥ 1740	137 (11)	106 (8.8)	48 (4.0)	N/A	300 (25)	N/A

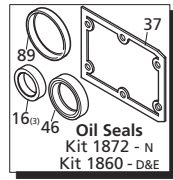
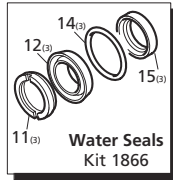
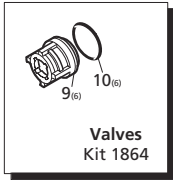
SPECIAL NOTE: Use AR64516 Oil. First change oil after 50 hours of use. Then every 500 hours. This oil is specially formulated to provide correct lubrication properties for our pumps. **No** other oil is factory approved for these pumps.

www.arnorthamerica.com • info@arnorthamerica.com
 Phone: 763-398-2008 or 1-800-893-4235 • Fax: 763-398-2009 or 1-800-331-2762
 Copyright © by AR North America





Repair Kits



Special Parts / Kits

Code	Description	Qty.
2029	Viton water seals $\phi 15$	1
2815	Kit for up to 180° F $\phi 15$ High Temp	1
1836	Rail Kit - 3/8" - 2 Rails & 4 Screws (N only)	1
1836H	Rail Kit - 1-1/2" - 2 Rails & 4 Screws (N only)	1

Pos	Code	Description	Qty.	Pos	Code	Description	Qty.
1	1322730	Head bolt M6x60 (137 in/lbs)	6	39	1980740	Plug 3/8" G Brass	2
3	1260250	Oil sight glass	1	40	1320022	Pump head - Brass	1
4	1260430	Snap ring	1	41	180101	O-Ring $\phi 17.5 \times 2$	1
5	1780690	Contrast disc	1	42	820361	Plug 1/2" G Brass	1
6	1140450	O-Ring $\phi 20.24 \times 2.62$	1	43	1322150	Crankshaft 24mm	1
7	1260162	Valve cap (300 in/lbs)	6	43	1321790	Crankshaft 24mm	1
7	1260162T	Valve Cap 1/4" threaded (300 in/lbs)	1	44	1380520	Key	1
7	1260163	Valve Cap 1/8" threaded (300 in/lbs)	1	45	1320370	Bearing	1
8	960160	O-Ring $\phi 17.86 \times 2.62$	6	46	1260750	Oil seal	1
9	1269050	Complete valve	6	47	1260470	Bolt M8x10	4
10	880830	O-Ring $\phi 15.54 \times 2.62$	6	48	1263890	Rail 1-1/2" (N Version Only)	2
10	1260140	Support ring reducer brass	3	48	1260830	Rail 3/8" (N Version Only)	2
10	1260141	Support ring reducer plastic	3	62	480671	Oil seal	1
10	1520120	Support ring	3	67	1321800	Hollow shaft $\phi 3/4"$	1
12	1260130	High pressure packing	3	67	1321810	Hollow shaft $\phi 3/4"$	1
13	1260151	Piston guide	3	68	1321190	Bearing	1
14	1260420	O-Ring $\phi 26.70 \times 1.78$	3	69	1579	Gas engine flange	1
15	1260440	Low pressure seal	3	70	1200430	Bolt M6x16	4
16	1260460	Oil seal	3	71	621710	Bolt 5/16"	4
19	1260790	Circlip $\phi i52$	1	73	1321820	Hollow shaft $\phi 5/8"$	1
20	1320370	Bearing	1	73	1321830	Hollow shaft $\phi 5/8"$	1
21	1320330	Bushing	1	73	1323010	Hollow shaft $\phi 5/8"$	1
22	1320010	Pump housing	1	74	1321190	Bearing	1
23	880130	Vented oil cap	1	75	650610	Bolt 3/8"	4
24	1260110	Nut (106 in/lbs)	3	77	1584	Electric motor flange - NEMA 56-C	1
25	1260100	Washer 8x13x0.50	3	78	1200430	Bolt M6x16	4
26	1260120	Plunger	3	79	780230	Washer	1
27	480480	O-Ring $\phi 4.48 \times 1.78$	3	80	390430	Bolt M6x25	1
28	1260091	Washer (slinger)	3	83	1260790	Circlip $\phi i52$	1
29	1260070	Plunger rod	3	84	1321080	Snap ring	1
30	1260080	Plunger rod pin	3	85	1381550	Washer	6
31	1260760	Bolt M5x20 (48 in/lbs)	6	88	1269209	Complete pump head	1
32	1329010	Rear cover	1	89	1266740	Cap	1
36	1260060	Con rod - Aluminum	3				
36	1320140	Con rod - Bronze	3				
37	1260040	Gasket	1				
38	740290	O-Ring $\phi 14 \times 1.78$	2				

Legend		
$\phi 15$	$\phi 15$	$\phi 15$
For \circ	For \bullet	For \blacksquare
XTV2G15	XTV2G18 (N&D)	XTV3G16
	XTV2G20	XTV3G18 (N)
	XTV2G22	XTV3G20
		XTV3G22
For \square		
XTV0.5G10 (E)		

AR64516 Oil
OIL CAPACITY - 10 OZ

