

Plunger Pumps

FEATURING

MANIFOLD: High strength forged brass for long term use.

BOLTS: Eight 6mm grade 12.9.

PLUNGERS: A special thick solid ceramic for long life, strong durability and more resilience.

CRANKCASE: Precision die-cast, large cooling fins and anodized for maximum heat dissipation. Sight glass, fill and side and bottom drain plugs.

BEARINGS: Oversized for maximum life and load disbursement, needle bearing on the drive side and ball on the non-drive side. Each bearing is held in position on the crankshaft and crankcase by snap rings. This assures positive alignment and centering of the connecting rods and crankshaft in relation to the crankcase, it also eliminates the crankshaft from floating.

VALVES, SEATS, AND SPRINGS: Stainless steel with specially designed Ultra Form cages to provide extra long life and positive seating.

SEALS AND V-PACKINGS: Continuously lubricating for extended life.

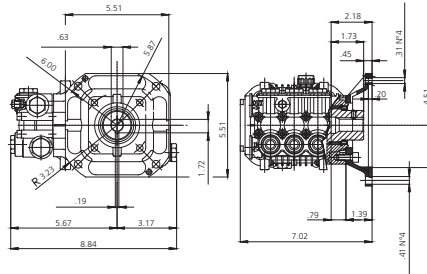
PLUNGER RODS: High strength stainless steel.

CONNECTING RODS: One piece special alloy aluminum based, oversized for maximum strength, load disbursement, and long life. Heavy pin area construction, for added load strength.

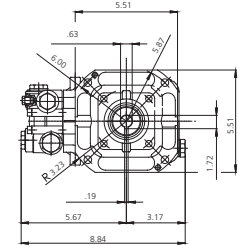
DIMENSIONS



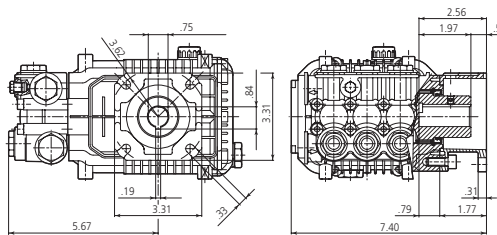
XMV E version 5/8 + F33
Hollow shaft pump ø 5/8



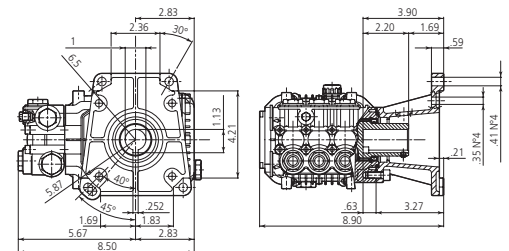
XMV D version 3/4 + F33
Hollow shaft pump ø 3/4



XMV D version + F25
Hollow shaft pump ø 3/4"



XMV D version + F24
Hollow shaft pump ø 1"



SPECIFICATIONS

MODEL	MAX GPM	MAX LMP	MAX PSI	MAX BAR	POWER EBHP	BORE DIA MM	STROKE MM	CRANKSHAFT ID STAMP	WEIGHT LBS.
XMV2G25E-F33	2.11	8.0	2500	172	5.0	15	4.8	12	15
XMV2.5G26D-F25	2.5	9.5	2600	179	5.0	15	6.2	10	15
XMV3G27D-F25	3.0	11.4	2700	186	5.0	15	7.6	9	15
XMV3.5G25D-F25	3.5	13.2	2500	170	5.5	15	8.2	8	15
XMV3G30D-F24	3.0	11.4	3000	205	5.5	15	7.6	9	16
XMV3G32D-F24	3.0	11.4	3200	220	5.5	15	7.6	9	16
XMV3.5G25D-F24	3.5	13.2	2500	170	5.5	15	8.2	8	16
XMV3.5G30D-F24	3.5	13.2	3000	205	7.0	15	8.2	8	16
XMV4G30D-F24	4.0	15.1	3000	205	7.5	15	9.4	7	16
XMV4G32D-F24	4.0	15.1	3200	221	10.0	15	9.4	7	16
XMV3.5G25D-F33	3.5	13.2	2500	170	5.5	15	8.2	8	15

Oil Capacity = 14.6 oz

Maximum Fluid Temperature = 140° F

Inlet Thread = 1/2" F

Discharge Thread = 3/8" F

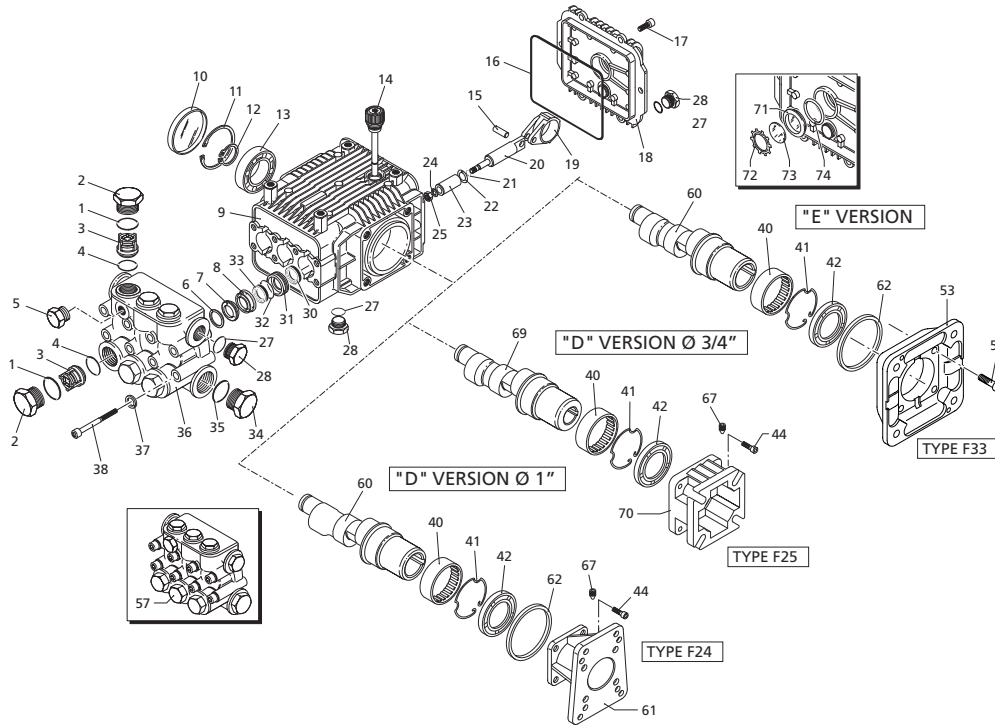
Torque Specifications Inch pounds (ft. lbs)

HEAD	PISTON NUT	REAR COVER	SIDE COVER	VALVE CAP	CON RODS
133 (11)	106 (8.8)	89 (7.5)	N/A	442 (37)	N/A

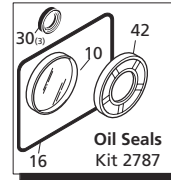
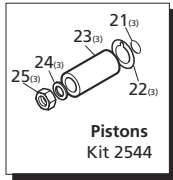
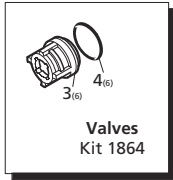
SPECIAL NOTE: Use AR64516 Oil. First change oil after 50 hours of use. Then every 500 hours. This oil is specially formulated to provide correct lubrication properties for our pumps. **No** other oil is factory approved for these pumps.

www.arnorthamerica.com • info@arnorthamerica.com
 Phone: 763-398-2008 or 1-800-893-4235 • Fax: 763-398-2009 or 1-800-331-2762
 Copyright © by AR North America





Repair Kits



Special Parts / Kits

Code	Description	Qty.
2776	Viton water seals ø15	1
2817	Kit for up to 180° F ø15 High Temp	1

Pos	Code	Description	Qty.	Pos	Code	Description	Qty.
1	960160	O-Ring ø17.86x2.62	6	38	1322730	Head bolt M6x60 (133 in/lbs)	8
2	1260162	Valve cap (442 in/lbs)	6	40	1321190	Bearing	1
3	1260162T	Valve Cap 1/4" threaded (442 in/lbs)	1	41	1321080	Snap ring	1
4	1269050	Complete valve	6	42	480671	Oil seal	1
5	880830	O-Ring ø15.54x2.62	6	44	180030	Bolt M8x20	4
6	620301	Plug 1/8" G	1	52	620610	Bolt M8x30	4
7	1780130	Support ring	3	53	1780910	Electric motor flange - F33	1
8	1260130	High pressure packing	3	57	1789200	Complete pump head	1
9	1780090	Piston guide	3	61	1780860	Hollow shaft ø5/8"	1
10	1780010	Pump body	1	62	1780340	Hollow shaft ø1"	1
11	1266740	Cap	1	67	1780920	Hollow shaft ø1"	1
12	1260790	Circlip øi52	1	69	1780330	Hollow shaft ø1"	1
13	1780550	Snap ring	1	69	1597	Gas engine flange - F24	1
14	1780490	Bearing	1	70	1780430	Bushing	1
15	880130	Oil cap	1	71	820440	Set screw	1
16	1780050	Piston pin	3	71	1780590	Hollow shaft ø3/4"	1
17	1780510	Gasket	1	72	1780930	Hollow shaft ø3/4"	1
18	1200430	Bolt M6x16 (89 in/lbs)	6	73	1780620	Hollow shaft ø3/4"	1
19	1789010	Complete cover	1	74	1780580	Gas engine flange - F25	1
20	1780040	Con rod	3	77	1260250	Oil sight glass	1
21	1780060	Guiding piston	3	78	1260430	Snap ring	1
22	480480	O-Ring ø4.48x1.78	3	79	1780690	Contrast disc	1
23	1260091	Washer (slinger)	3	80	1140450	O-Ring ø20.24x2.62	1
24	1780070	Plunger	3				
25	1260100	Piston washer	3				
26	1260110	Nut M8 (106 in/lbs)	3				
27	740290	O-Ring ø14x1.78	3				
28	1980740	Plug 3/8" G	3				
29	1260470	Bolt M8x10	4				
30	1260460	Seal	3				
31	1780100	Rear piston guide	3				
32	770260	O-Ring ø23.52x1.78	3				
33	1260440	Low pressure seal	3				
34	820361	Plug 1/2" G - Brass	1				
35	180101	O-Ring ø17.5x2	1				
36	1780380	Pump head	1				
37	1381550	Washer	8				

AR64516 Oil
OIL CAPACITY - 14.5 OZ

Legend		
Ø 15	Ø 15	Ø 15
For ○	For ▲	For ■
XMV3G25	XMV3.5G22	XMV4G20
XMV3G27	XMV3.5G25	XMV4G22
XMV3G30		XMV4G25
XMV3G32		XMV4G30
		XMV4G32
For ◆	For ▼	For ☒
XMV3.5G30	XMV2G10	XMV2.5G26
	XMV2G15	
	XMV2G22	
	XMV2G25	

