

Plunger Pumps

FEATURING

MANIFOLD: High strength forged brass for long term use.

BOLTS: Eight 6mm grade 12.9.

PLUNGERS: A special thick solid ceramic for long life, strong durability and more resilience.

CRANKCASE: Precision die-cast, large cooling fins and anodized for maximum heat dissipation. Sight glass, fill and side and bottom drain plugs.

BEARINGS: Oversized for maximum life and load disbursement, needle bearing on the drive side and ball on the non-drive side. Each bearing is held in position on the crankshaft and crankcase by snap rings. This assures positive alignment and centering of the connecting rods and crankshaft in relation to the crankcase, it also eliminates the crankshaft from floating.

VALVES, SEATS, AND SPRINGS: Stainless steel with specially designed Ultra Form cages to provide extra long life and positive seating.

SEALS AND V-PACKINGS: Continuously lubricating for extended life.

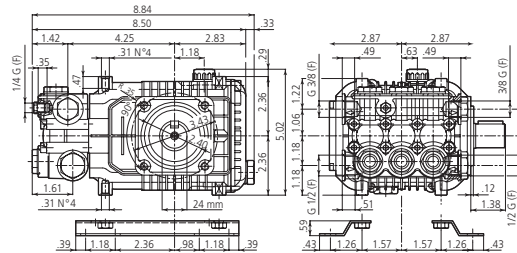
PLUNGER RODS: High strength stainless steel.

CONNECTING RODS: One piece special alloy aluminum based, oversized for maximum strength, load disbursement, and long life. Heavy pin area construction, for added load strength.

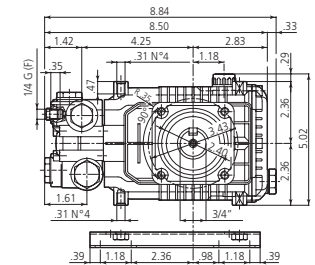
DIMENSIONS



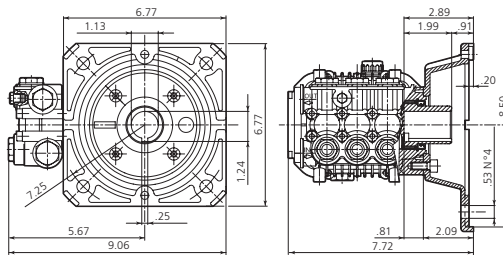
XMA N version Solid shaft pump ø 24 mm



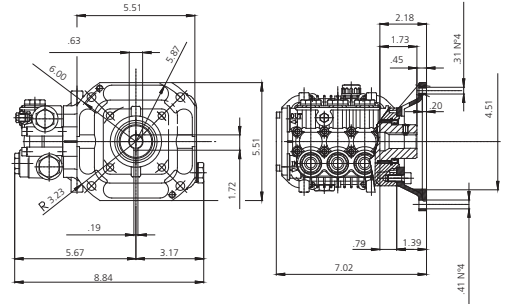
XMA N version Solid shaft pump ø 3/4"



XMA E version 1" 1/8 + F17 Hollow shaft pump ø 1" 1/8



XMA E version 5/8 + F33 Hollow shaft pump ø 5/8



SPECIFICATIONS

| MODEL | MAX GPM | MAX LMP | MAX PSI | MAX BAR | POWER EBHP | BORE DIA MM | STROKE MM | CRANKSHAFT ID STAMP | WEIGHT LBS. |
|----------------|---------|---------|---------|---------|------------|-------------|-----------|---------------------|-------------|
| XMA3G25N | 3.0 | 11.4 | 2500 | 170 | 5.0 | 15 | 13.2 | 3 | 14 |
| XMA3.5G25N | 3.5 | 13.2 | 2500 | 170 | 5.5 | 15 | 15.4 | 1 | 14 |
| XMA4G20N | 4.0 | 15.1 | 2000 | 140 | 5.5 | 18 | 13.2 | 3 | 14 |
| XMA3.5G22N | 3.5 | 13.2 | 2200 | 150 | 5.0 | 15 | 15.4 | 1 | 14 |
| XMA3G25E-F17 | 3.0 | 11.4 | 2500 | 170 | 5.0 | 15 | 13.2 | 3 | 15 |
| XMA3G30E-F17 | 3.0 | 11.4 | 3000 | 206 | 6.2 | 15 | 13.2 | 3 | 15 |
| XMA3.5G25E-F17 | 3.5 | 13.2 | 2500 | 170 | 5.5 | 15 | 15.4 | 1 | 15 |
| XMA2G15E-F33 | 2.11 | 8.0 | 1500 | 105 | 2.0 | 15 | 9.4 | 7 | 15 |
| XMA2G22E-F33 | 2.11 | 8.0 | 2200 | 150 | 3.0 | 15 | 9.4 | 7 | 15 |
| XMA2.5G18E-F33 | 2.5 | 9.5 | 1800 | 120 | 3.0 | 15 | 10.6 | 5 | 15 |
| XMA3G18E-F33 | 3.0 | 11.4 | 1800 | 120 | 4.0 | 15 | 13.2 | 3 | 15 |

Oil Capacity = 14.6 oz

Maximum Fluid Temperature = 140° F

Inlet Thread = 1/2" F

Discharge Thread = 3/8" F

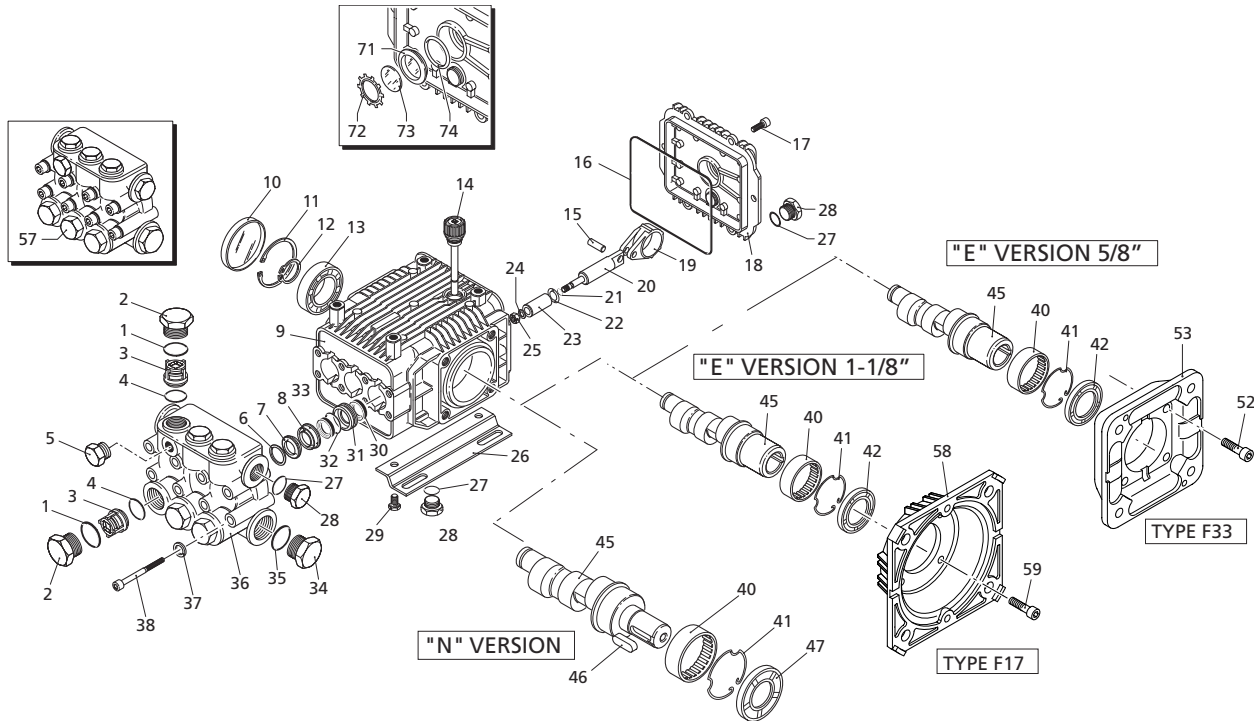
Torque Specifications Inch pounds (ft. lbs)

| HEAD | PISTON NUT | REAR COVER | SIDE COVER | VALVE CAP | CON RODS |
|----------|------------|------------|------------|-----------|----------|
| 133 (11) | 106 (8.8) | 89 (7.5) | N/A | 442 (37) | N/A |

SPECIAL NOTE: Use AR64516 Oil. First change oil after 50 hours of use. Then every 500 hours. This oil is specially formulated to provide correct lubrication properties for our pumps. **No** other oil is factory approved for these pumps.

www.arnorthamerica.com • info@arnorthamerica.com
 Phone: 763-398-2008 or 1-800-893-4235 • Fax: 763-398-2009 or 1-800-331-2762
 Copyright © by AR North America





| Repair Kits | |
|-------------|--|
| | Valves Kit 1864 |
| | Pistons Kit 2544 - ø 15 Kit 2545 - ø 18 |
| | Water Seals Kit 2741 - ø 15 Kit 2747 - ø 18 |
| | Oil Seals Kit 2786 - N Kit 2787 - E |
| | Support Rings Kit 2740 - ø 15 Kit 2745 - ø 18 |

| Special Parts / Kits | | |
|----------------------|---------------------------------------|------|
| Code | Description | Qty. |
| 2776 | Viton water seals ø15 | 1 |
| 2777 | Viton water seals ø18 | 1 |
| 2729 | Rail Kit - 5/8" - 2 Rails & 4 Bolts | 1 |
| 2633 | Rail Kit - 1-3/4" - 2 Rails & 4 Bolts | 1 |
| 2633H | Rail Kit - 2-5/8" - 2 Rails & 4 Bolts | 1 |

| Pos | Code | Description | Qty. | Pos | Code | Description | Qty. | Pos | Code | Description | Qty. |
|-----|------------------|------------------------------|------|-----|---------|-----------------------------|------|---------------|-------------------------------|-------------|-------------|
| 1 | 960160 | O-Ring ø17.86x2.62 | 6 | 31 | 1780100 | Rear piston guide ø15 | 3 | AR64516 | Oil | | 1 |
| 2 | 1260162 | Valve cap | 6 | 32 | 1780120 | Rear piston guide ø18 | 3 | | <i>OIL CAPACITY - 14.5 OZ</i> | | |
| | 1260162T | Valve Cap 1/4" threaded | 1 | 33 | 770260 | O-Ring ø23.52x1.78 | 3 | Legend | | | |
| 3 | 1269050 | Complete valve | 6 | 33 | 1260440 | Low pressure seal ø15 | 3 | | | | ø 15 |
| 4 | 880830 | O-Ring ø15.54x2.62 | 6 | 34 | 820361 | Plug 1/2" G | 1 | For ○ | For ▲ | For ● | |
| 5 | 620301 | Plug 1/8" G | 1 | 35 | 180101 | O-Ring ø17.5x2 | 1 | XMA3G25 | XMA3.5G22 | XMA4G20 | |
| 6 | 1780130 | Support ring ø15 | 3 | 36 | 1780020 | Pump head | 1 | | XMA3.5G25 | | |
| 7 | 1780140 | Support ring ø18 | 3 | 37 | 1381550 | Washer | 8 | For ■ | For ◆ | | |
| 8 | 1260130 | High pressure packing ø15 | 3 | 38 | 1322730 | Head bolt M6x60 | 8 | XMA2G22 | XMA3.5G22 (3/4" shaft) | | |
| | 1260220 | High pressure packing ø18 | 3 | 40 | 1321190 | Bearing | 1 | For □ | For ▼ | | |
| | 1780090 | Piston guide ø15 | 3 | 41 | 1321080 | Snap ring | 1 | XMA2.5G18 | XMA3G18 | | |
| | 1780110 | Piston guide ø18 | 3 | 42 | 480671 | Oil seal | 1 | | | | |
| 9 | 1780010 | Pump body | 1 | | 1780150 | Crankshaft 24mm | ▲ 1 | | | | |
| 10 | 1266740 | Cap | 1 | | 1780170 | Crankshaft 24mm | ○ 1 | | | | |
| 11 | 1260790 | Circlip ø152 | 1 | | 1780180 | Crankshaft 24mm | ● 1 | | | | |
| 12 | 1780550 | Snap ring | 1 | | 1780820 | Crankshaft ø3/4" | ◆ 1 | | | | |
| 13 | 1780490 | Bearing | 1 | | 1781050 | Hollow shaft ø5/8" | ■ 1 | | | | |
| 14 | 880130 | Vented oil cap | 1 | | 1780990 | Hollow shaft ø5/8" | □ 1 | | | | |
| 15 | 1780050 | Piston pin | 3 | | 1781180 | Hollow shaft ø5/8" | ▼ 1 | | | | |
| 16 | 1780510 | Gasket | 1 | | 1780290 | Hollow shaft ø1-1/8" | ▲ 1 | | | | |
| 17 | 1200430 | Bolt M6x16 | 6 | | 1780300 | Hollow shaft ø1-1/8" | ○ 1 | | | | |
| 18 | 1789010 | Complete cover | 1 | | 1780950 | Hollow shaft ø1-1/8" | ● 1 | | | | |
| 19 | 1780040 | Con rod | 3 | | 1380520 | Key | 1 | | | | |
| 20 | 1780060 | Guiding piston | 3 | 46 | 1260750 | Oil seal | 1 | | | | |
| 21 | 480480 | O-Ring ø4.48x1.78 | 3 | 47 | 620610 | Bolt M8x30 | ▼ 4 | | | | |
| 22 | 1260091 | Washer (slinger) | 3 | 53 | 1780910 | Electric motor flange - F33 | 1 | | | | |
| 23 | 1780070 | Plunger ø15 | 3 | 57 | 1789201 | Complete pump head ø15 | 1 | | | | |
| | 1780080 | Plunger ø18 | 3 | | 1789202 | Complete pump head ø18 | 1 | | | | |
| 24 | 1260100 | Piston washer | 3 | 58 | 1591 | Motor Flange | 1 | | | | |
| 25 | 1260110 | Nut M8 | 3 | 59 | 180030 | Bolt M8x20 | 4 | | | | |
| | 1380141 | Rail 5/8" (N Version Only) | 2 | 71 | 1260250 | Oil sight glass | 1 | | | | |
| 26 | Z-Bracket 1-3/4" | Rail 1-3/4" (N Version Only) | 2 | 72 | 1260430 | Snap ring | 1 | | | | |
| | Z-Bracket | Rail 2-5/8" (N Version Only) | 2 | 73 | 1780690 | Contrast disc | 1 | | | | |
| 27 | 740290 | O-Ring ø14x1.78 | 3 | 74 | 1140450 | O-Ring ø20.24x2.62 | 1 | | | | |
| 28 | 1980740 | Plug 3/8" G | 3 | | | | | | | | |
| 29 | 1260470 | Bolt M8x10 | 4 | | | | | | | | |
| 30 | 1260460 | Oil seal | 3 | | | | | | | | |

