

# USER MANUAL

## DELUXE 20' TELESCOPING LANCE ASSEMBLY

---



### Products

---

| Part #  | Length | Inlet     | Outlet    |
|---------|--------|-----------|-----------|
| 27.5022 | 20'    | 3/8" Plug | 1/4" QC F |

The product comes supplied with:

- Non Molded Extension Wand M22 Male Inlet x 1/4" Quick Coupler Outlet

## Product's use

---

- Use fresh and clear water, with common detergents.
- We also recommend that any impure fluid be adequately filtered before it is used.
- Use the correct size nozzle for the flow and pressure of the washer the lance is being installed on and with the trigger pulled carefully adjust the unloader to obtain the correct working pressure. This will avoid dangerous pressure spikes in the system.
- The product will allow for the use of hot water (see Technical Chart). Check that the lance is compatible with the system's functioning data in order to not exceed the maximum values of pressure and temperature.
- Fits gas and electric pressure washers rated up to 4000 PSI.

## Warnings and cautions

---

- Beware of overhead power lines. Contacting these lines may result in electrocution, injury, or even death.
- Always shut down pressure washer / water supply and depressurize before removal of cleaning accessories.
- Wear Safety glasses when operating unit.
- Never point lance at humans or animals. Never place any body part in the water stream.
- Serious injury can result from the high pressure discharge produced by pressure washers.
- To prevent accidental discharge from the gun always use the trigger lock when you've finished spraying.
- Make sure all connections are secure. Hold the gun securely while starting pressure washer unit.
- When operating pressure washer always stand on a solid stable surface. Do not stand on ladders, chairs, etc.
- Before changing out tips, make sure the pressure washer has been turned off and depressurized. The collar on the quick disconnect socket will snap back into its original forward locking position when tip is inserted correctly.
- Do not fully extend the telescoping wand. A minimum of 6 inches must remain inside each section of the wand for stability.

## Instructions for use

---

- **TO ADJUST WAND LENGTH**  
Press yellow button on blue connections and then pull to extend to desired length. Release yellow button to fix the position being sure that the internal pin is completely seated into one of the holes on the aluminum sections.
- **TO CONNECT THE NON MOLDED EXTENSION WAND**  
Insert M22 Male plug on the inlet of the Non Molded extension into the M22 Female coupler located on the outlet of the aluminum extension. Tighten the M22 Female coupler until the connection is fully secure.

## Technical chart

---

| <b>Code</b> | <b>Length</b> | <b>Max Pressure</b> | <b>Max Flow</b> | <b>Max Temperature</b> | <b>Inlet</b> | <b>Outlet</b> |
|-------------|---------------|---------------------|-----------------|------------------------|--------------|---------------|
| 27.5022     | 20'           | 4000psi             | 10.5 USgpm      | 275°F *                | 3/8" Plug    | 1/4" QC F     |

\* The lance has been designed and tested to work properly with liquids at 195°F, but for short periods of time, temperatures of up to 275°F can be used.

## Care and maintenance

---

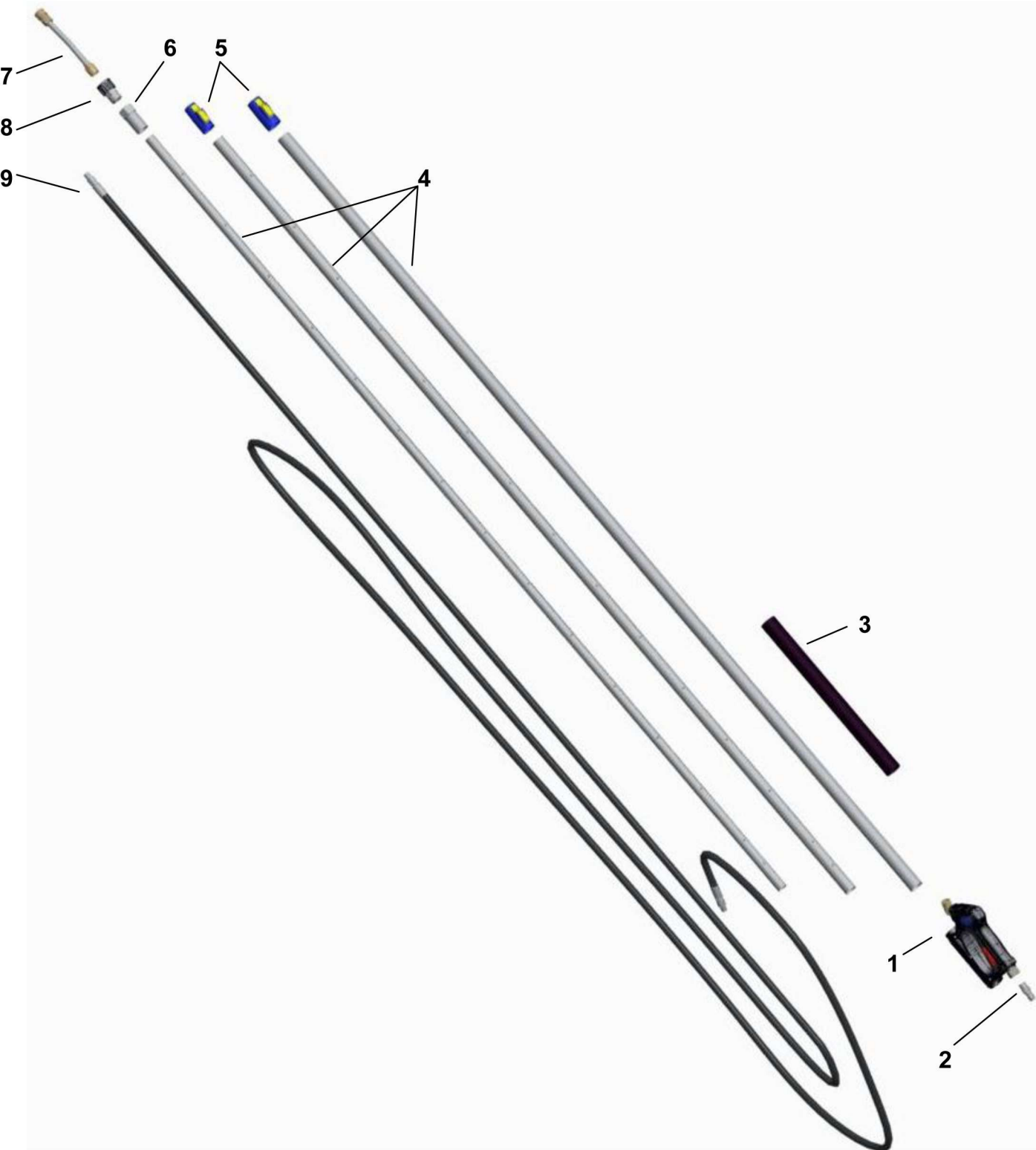
Before proceeding to the maintenance and the storage of the product, shut off the pressure washer and close the water supply. Depressurize by squeezing the gun trigger until all of the water has been drained out of the unit. Accessories can now be disconnected safely for storage in a cool, dark area. Always clean before storing.

Service must be done exclusively by skilled workers using only original MTM Hydro's spare parts. The Manufacturer is not responsible or liable for any loss or damage arising from improper service or service done by unskilled workers.

## Troubleshooting

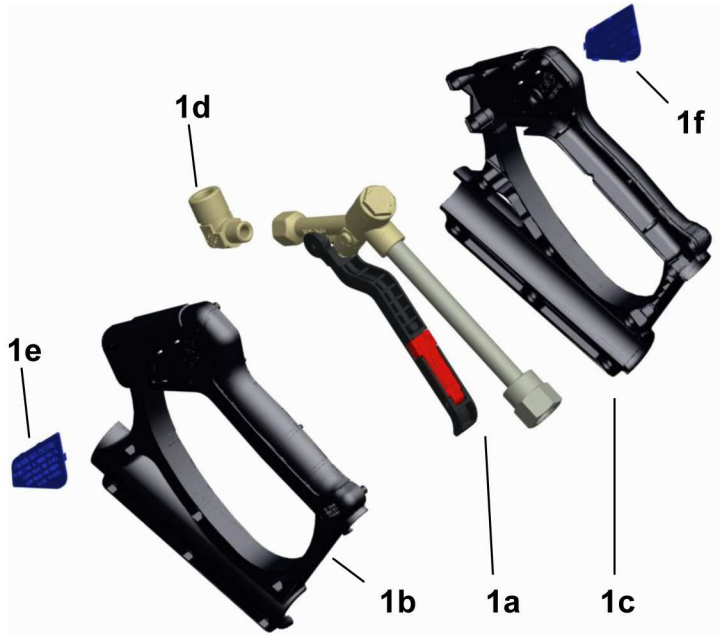
---

| <b>problem</b>   | <b>possible cause</b>         | <b>corrective action</b>           |
|------------------|-------------------------------|------------------------------------|
| Connections leak | Loose connections             | Retighten fittings                 |
|                  | Sealant worn                  | Reapply pipe tape                  |
|                  | O-ring is worn                | Replace o-ring                     |
| Unit won't spray | Unit power / water supply off | Consult owners manual              |
|                  | Unit is clogged               | Clean Nozzle - Flush unit w/ water |



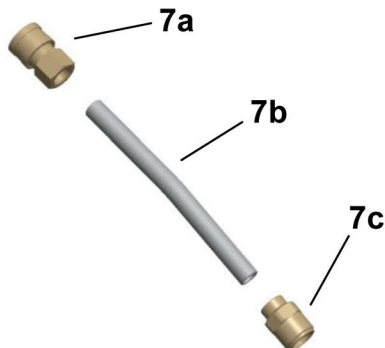
| Pos. | Part #  | Description                                 |
|------|---------|---|
| 1    | 41.0385 | COMPLETE GUN ASSEMBLY                       |
| 2    | 24.0076 | 3/8" PLATED QC PLUG                         |
| 3    | N/A     | SPONGE GRIP                                 |
| 4    | 28.0295 | 20' ALUMINIUM POLES - CENTER & TOP          |
| 4    | 28.0294 | 20' ALUMINIUM POLES - BASE                  |
| 5    | 41.0609 | SNAP COLLARS REPLACEMENT KIT - 2 PACK       |
| 6    | 24.0578 | 3/4" F ALUMINIUM ADAPTOR                    |
| 7    | 27.0089 | LANCE EXTENSION                             |
| 8    | 24.0500 | SCREW QUICK COUPLING M22X1.5F - 3/4" M      |
| 9    | 30.0160 | 20' 5/16" HOSE ASSEMBLY 1/4" MPT - 1/4" MPT |

**Item# 41.0385**

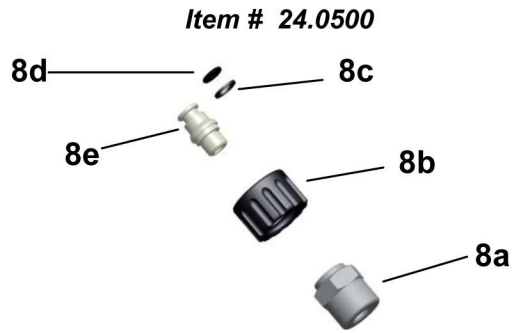


| Pos. | Description                           |
|------|---------------------------------------|
| 1a   | SG35 GUN MECHANICS ASSEMBLY           |
| 1b   | LEFT PLASTIC GUN SHELL                |
| 1c   | RIGHT PLASTIC GUN SHELL               |
| 1d   | BRASS ELBOW ¼" M - F                  |
| 1e   | LEFT PLASTIC INSERT (WARNING)         |
| 1f   | RIGHT PLASTIC INSERT (TECHNICAL DATA) |

**Item# 27.0089**



| Pos. | Part #  | Description                            |
|------|---------|--|
| 7a   | 24.0067 | BRASS QC SOCKET ¼" FPT                 |
| 7b   |         | ¼" PLATED PIPE                         |
| 7c   | 24.0090 | SCREW QUICK COUPLING M22X1.5M – ¼" FTP |



| <i>Pos.</i> | <i>Description</i>           |
|-------------|------------------------------|
| <b>8a</b>   | ALUMINIUM NIPPLE ¼"FTP – ¾"M |
| <b>8b</b>   | RING NUT M22X1.5F            |
| <b>8c</b>   | BACK-UP RING SR110           |
| <b>8d</b>   | O-RING 109                   |
| <b>8e</b>   | S.STEEL STEM ¼" – 14MM       |