

Axial Radial Drive Pumps

FEATURING

MANIFOLD: High strength forged brass for long term use.

BOLTS: Three 8mm grade 8.8.

PISTONS: Ceramic coated stainless steel for longer pump life in harsh environments.

CRANKCASE: Precision die-cast, large cooling fins for maximum heat dissipation. Sight glass, fill and drain plugs

BEARINGS: Angular contact ball bearing stabilizes the crankshaft and one thrust needle bearing absorbs the plunger load and assure long radial plate life. All of the thrust plates are made of heat treated hardened steel for extended life.

VALVES, SEATS, AND SPRINGS: Stainless steel with specially designed Ultra Form cages provide extra long life and positive seating.

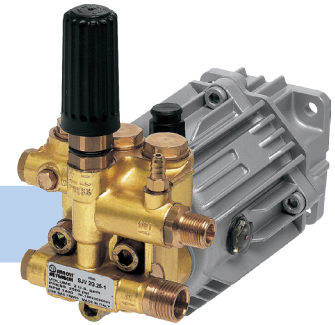
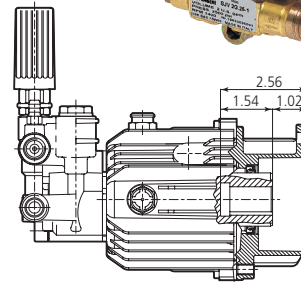
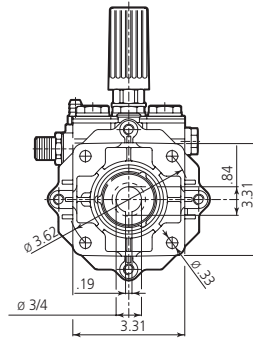
SEALS AND V-PACKINGS: Continuously lubricating for extended life.

UNLOADER: Built in to optimize performance while reducing setup time. Integral trap pressure, fixed or adjustable chemical injector.

DIMENSIONS

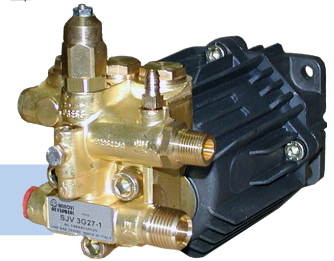
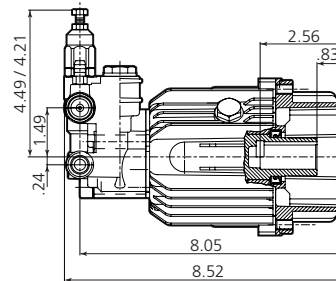
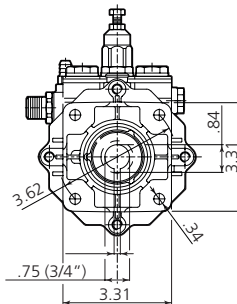
SJV

D version + F7
Hollow shaft pump \varnothing 3/4"



SJV

D version + F7
Hollow shaft pump \varnothing 3/4"



SPECIFICATIONS

MODEL	MAX GPM	MAX LMP	MAX PSI	MAX BAR	POWER EBHP	BORE DIA MM	STROKE MM	CRANKSHAFT ID STAMP	WEIGHT LBS.
SJV2.5G24D-F7	2.5	9.5	2500	170	4.5	15	5.8	-	11
SJV2.5G25D-F7**	2.5	9.5	2500	170	4.5	15	5.8	-	11
SJV2.5G27D-F7	2.5	9.5	2700	186	4.5	15	5.8	-	11
SJV3G27D-F7	3.0	11.4	2700	186	5.2	15	6.8	-	11
SJV3G27D-EZ	3.0	11.4	2700	186	5.2	15	6.8	-	11

**Special 22mm M Outlet

Oil Capacity = 4.5 oz

Maximum Fluid Temperature = 140° F

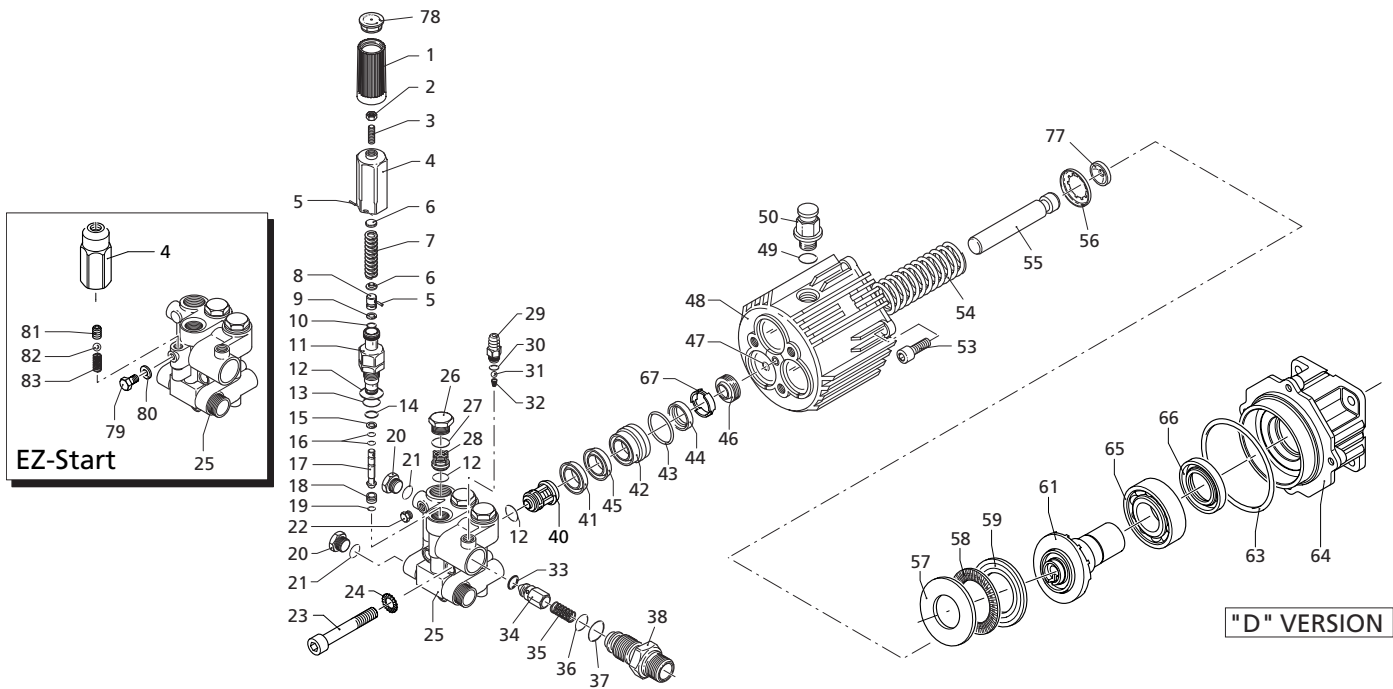
Inlet Thread = 1/2" M

Discharge Thread = 3/8" M

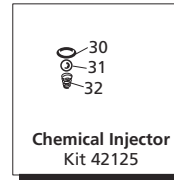
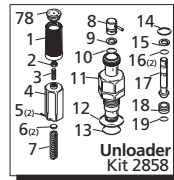
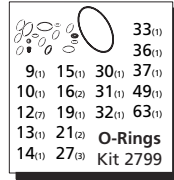
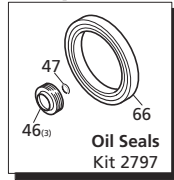
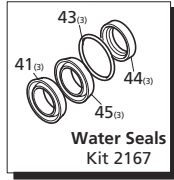
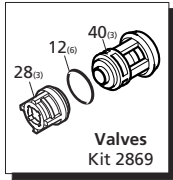
Torque Specifications Inch pounds (ft. lbs)

HEAD	PISTON NUT	REAR COVER	SIDE COVER	VALVE CAP	CON RODS
443 (37)	N/A	228 (19)	N/A	400 (37)	N/A

SPECIAL NOTE: Use only AR64545 for the XJ/SJ/BK Series pumps only: Do NOT change oil. Use oil only to add if low. This oil is a specially formulated synthetic with special additives for the demands of the XJ, SJ and BK pump series. No other oil is factory approved for these pumps, and could result in pump failure.



Repair Kits



Pos	Code	Description	Qty.	Pos	Code	Description	Qty.	Pos	Code	Description	Qty.
1	1981780	Knob	1	36	394280	O-Ring ϕ 12.42x1.78	1	AR64545 Oil 1			
2	1980300	Nut	1	37	1200690	O-Ring ϕ 15.6x1.78	1	OIL CAPACITY - 4.5 OZ			
3	1980470	Adjusting screw	1	38	1270141	Injector adapter	1	Legend			
4	1980390	Handle insert	1	40	1989050	Inlet valve	3				
4	1980540	Handle insert - EZ Start	1	41	1342761	Gasket	3		For ■ SJV2.5G25	For ▲ SJV3G27	
5	1080070	Pin	2	42	1981570	Piston guide	3				
6	1980220	Plate spring	2	43	770260	O-Ring ϕ 23.52x1.78	3				
7	1271070	Spring	1	44	1260440	Gasket	3				
8	1080041	Upper piston	1	45	1981580	Ring	3				
9	1080401	Back-up ring	1	46	1980410	Oil seal	3				
10	1080250	O-Ring ϕ 7.66x1.78	1	47	770090	O-Ring ϕ 5.28x1.78	1				
11	1980210	Piston guide	1	48	1983050	Pump housing	1				
12	880830	O-Ring ϕ 15.54x2.62	7	49	740290	O-Ring ϕ 14x1.78	1				
13	740290	O-Ring ϕ 14x1.78	1	50	1980380	Oil cap	1				
14	800560	O-Ring ϕ 8.73x1.78	1	53	180030	Bolt M8x20	(228 in/lbs) 4				
15	1271170	Back-up ring	1	54	1981140	Spring	3				
16	1080190	O-Ring ϕ 2.9x1.78	2	55	1981120	Piston	3				
17	1271160	Lower piston	1	56	1980150	Spring retainer	3				
18	1980200	Valve seat	1	57	1983100	Rail	1				
19	1470210	O-Ring ϕ 9x1	1	58	1980250	Bearing	1				
20	880581	Plug 1/4" G	2	59	1980240	Thrust washer	1				
21	820510	O-Ring ϕ 10.82x1.78	2	61	1982710	Hollow shaft	● 1				
22	620301	Plug 1/8" G	1	61	1982810	Hollow shaft	■ 1				
23	1980310	Head bolt M10x65	(443 in/lbs) 3	61	1982840	Hollow shaft	▲ 1				
24	650530	Lockwasher	3	63	1980340	O-Ring ϕ 83.8x2.62	1				
25	1982450	Pump head brass	1	64	1981420	Flange F7	1				
25	1982740	Pump head - EZ Start	1	65	1982360	Rear bearing	1				
26	1260162	Valve cap	(443 in/lbs) 3	66	1140380	Seal	1				
27	960160	O-Ring ϕ 17.86x2.62	3	67	1980430	Spacer	3				
28	1269050	Valve assembly	3	77	1981130	Plunger shoe	3				
29	1982520	Hose tail	1	78	1981770	Knob plug	1				
30	480480	O-Ring ϕ 4.48x1.78	1	79	1982560	Screw TE M6x8 - EZ Start	1				
31	1250280	Ball	1	80	1982570	Washer ϕ 6.3 - EZ Start	1				
32	1560520	Spring	1	81	1982440	Crub screw M8x8 - EZ Start	1				
33	1460430	O-Ring ϕ 4x2.5	1	82	1982240	Ball - EZ Start	1				
34	1540170	Check valve	1	83	1981800	Spring - EZ Start	1				
35	1080091	Spring	1								

