

Plunger Pumps

FEATURING

MANIFOLD: High strength forged brass or nickel plated for long term use.

BOLTS: Eight 8mm grade 8.8.

PLUNGERS: A special thick solid ceramic for long life, strong durability and more resilience.

CRANKCASE: Precision die-cast, large cooling fins and anodized for maximum heat dissipation. Sight glass, fill and side and bottom drain plugs.

BEARINGS: Oversized tapered roller bearing for maximum life and load distribution.

BEARINGS SUPPORTS: Precision die-cast and machined to assure concentricity and alignment.

VALVES, SEATS, AND SPRINGS: Stainless steel with specially designed Ultra Form cages to provide long life and positive seating.

SEALS AND V-PACKINGS: Continuously lubricating for extended life.

PLUNGER RODS: Stainless steel construction for strength, no plating to scrape off, back-up and o-ring plunger sealing system.

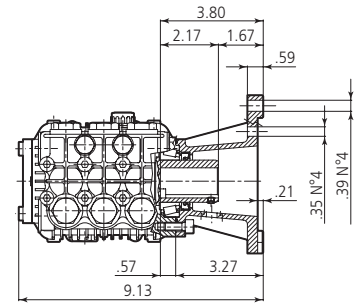
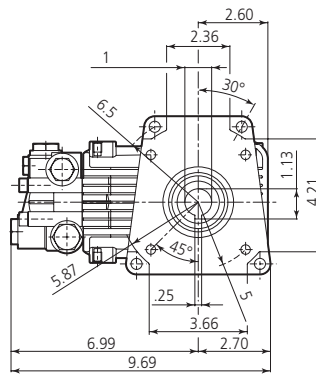
CONNECTING RODS: One piece special alloy aluminum or bronze for higher pressure, oversized for maximum strength, load disbursement, and long life. Heavy pin area construction, for added load strength.

DIMENSIONS



RKV

D version + F24
Hollow shaft pump ø 1"



SPECIFICATIONS

MODEL	MAX GPM	MAX LMP	MAX PSI	MAX BAR	POWER EBHP	BORE DIA MM	STROKE MM	CRANKSHAFT ID STAMP	WEIGHT LBS.
RKV3.5G30AD-F24	3.5	13.2	3000	205	7.5	18	6.2	9	21
RKV3.5G35D-F24	3.5	13.2	3500	240	8.4	18	6.2	9	21
RKV3.5G40HD-F24	3.5	13.2	4000	275	10.0	18	6.2	9	21
RKV4G30AD-F24	4.0	15.1	3000	205	7.5	18	7.0	8	21
RKV4G32D-F24	4.0	15.1	3200	220	7.5	18	7.0	8	21
RKV4G35D-F24	4.0	15.1	3500	240	7.5	18	7.0	8	21
RKV4G35HD-F24	4.0	15.1	3500	240	7.5	18	7.0	8	21
RKV4G37D-F24	4.0	15.1	3700	255	7.5	18	7.0	8	21
RKV4G40HD-F24	4.0	15.1	4000	275	11.0	18	7.0	8	21
RKV4.5G32D-F24	4.5	17.0	3200	220	12.0	18	8.0	7	21
RKV4.5G40HD-F24	4.5	17.0	4000	275	12.0	18	8.0	7	21
RKV5G40HD-F24	5.0	18.3	4000	275	13.7	18	8.6	11	21
RKV5.5G40HD-F24	5.5	20.8	4000	275	15.0	18	9.8	6	21

Oil Capacity = 15.3 oz

Maximum Fluid Temperature = 140° F

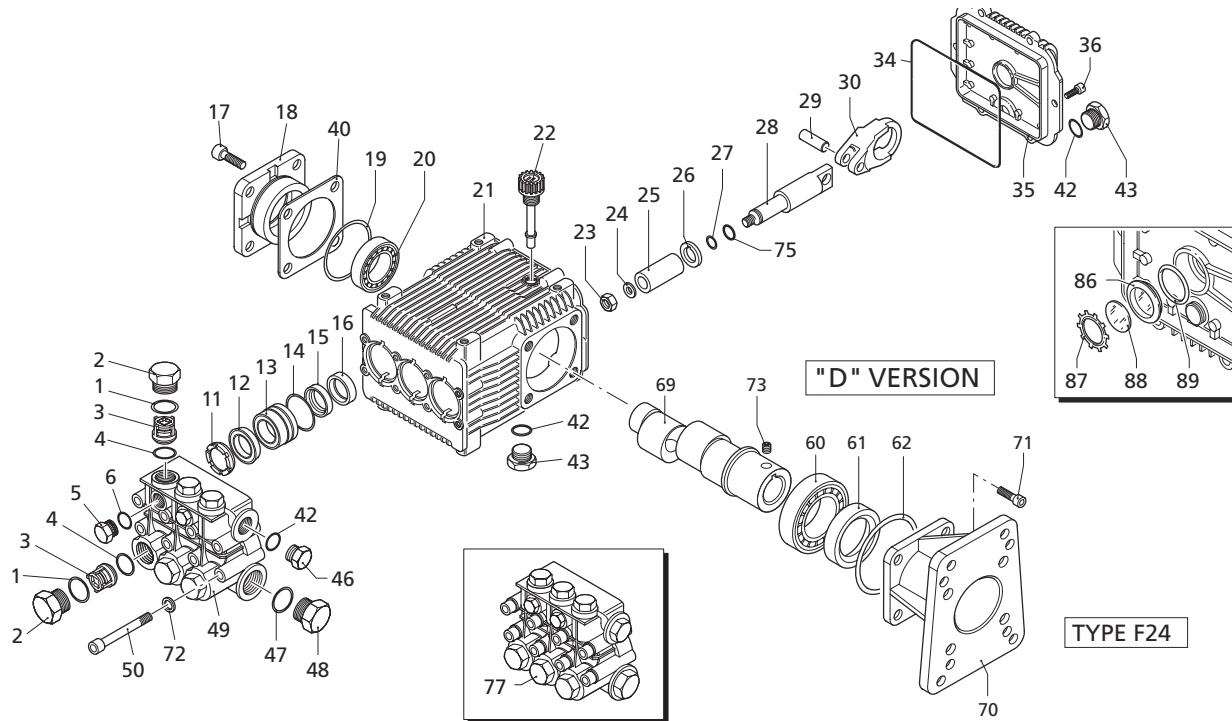
Inlet Thread = 1/2" F

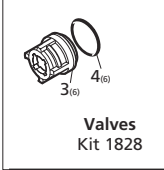

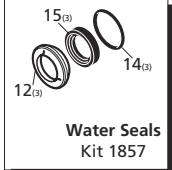
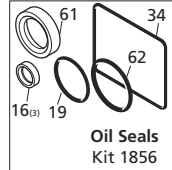

Discharge Thread = 3/8" F

Torque Specifications Inch pounds (ft. lbs)

HEAD	PISTON NUT	REAR COVER	SIDE COVER	VALVE CAP	CON RODS
217 (18)	106 (8.8)	89 (7.5)	217 (18)	478 (40)	N/A

SPECIAL NOTE: Use AR64516 Oil. First change oil after 50 hours of use. Then every 500 hours. This oil is specially formulated to provide correct lubrication properties for our pumps. **No** other oil is factory approved for these pumps.



Repair Kits	
	
	
	

Special Parts / Kits		
Code	Description	Qty.
2809	Viton water seals $\phi 18$	1
2819	Kit for up to 180° F $\phi 18$ High Temp	1

Pos	Code	Description	Qty.	Pos	Code	Description	Qty.
1	960160	O-Ring $\phi 17.86 \times 2.62$	6	46	1380120	Shim 0.10 mm	1-3
2	960090	Valve cap - Brass (478 in/lbs) $\circ \bullet$	6	47	1380130	Shim 0.20 mm	1-3
3	960850	Valve cap - SS (478 in/lbs) $\square \blacktriangle \blacklozenge \boxtimes$	6	48	1380530	Shim 0.25 mm	1-3
4	960090T	Valve cap - 1/4" threaded - Brass (478 in/lbs)	1	49	1382810	Shim 0.05 mm	1-3
5	960850T	Valve cap - 1/4" threaded - SS (478 in/lbs)	1	50	740290	O-Ring $\phi 14 \times 1.78$	3
6	889052	Complete valve	6	60	1980740	Plug 3/8" G - Brass	2
7	880830	O-Ring $\phi 15.54 \times 2.62$	6	61	1980740	Plug 3/8" G - Brass	$\circ \bullet \blacktriangle$ 1
8	880581	Plug 1/4" G - Brass	2	62	1981180	Plug 3/8" G - NP	$\square \blacktriangle \blacklozenge \boxtimes$ 1
9	1380690	Plug 1/4" G - NP	2	70	180101	O-Ring $\phi 17.5 \times 2$	$\square \blacktriangle \blacklozenge \boxtimes$ 1
10	820510	O-Ring $\phi 10.82 \times 1.78$	2	71	820361	Plug 1/2" G - Brass	$\circ \bullet \blacktriangle$ 1
11	960110	Support ring	3	72	960870	Plug 1/2" G - NP	$\square \blacktriangle \blacklozenge \boxtimes$ 1
12	880320	High pressure packing	3	73	1381071	Pump head - Brass	$\circ \bullet \blacktriangle$ 1
13	1380090	Piston guide	3	74	1381070	Pump head - NP	$\square \blacktriangle \blacklozenge \boxtimes$ 1
14	961240	O-Ring $\phi 31.47 \times 1.78$	3	75	820150	Head bolt M8x70 (217 in/lbs)	8
15	880330	Gasket	3	76	1380320	Bearing	1
16	1383130	Oil seal	3	77	621170	Oil seal	1
17	850370	Bolt M8x16 (217 in/lbs)	8	78	1380220	O-Ring $\phi 72.75 \times 1.78$	1
18	1380050	Closed bearing support	1	79	2280140	Hollow shaft $\phi 1$	$\circ \square$ 1
19	640030	O-Ring $\phi 59.99 \times 2.62$	2	80	2280130	Hollow shaft $\phi 1$	$\bullet \blacktriangle \star$ 1
20	2280240	Bearing	1	81	2280590	Hollow shaft $\phi 1$	\blacklozenge 1
21	1382770	Pump housing	1	82	2280600	Hollow shaft $\phi 1$	\boxtimes 1
22	880130	Vented oil cap	1	83	1597	Gas engine flange F24	1
23	962010	Nut M8 (106 in/lbs)	3	84	1381850	Washer	8
24	962000	Washer $\phi 8.1$	3	85	820440	Set screw M6x6	1
25	1380940	Ceramic piston	3	86	1080401	Back-up ring	3
26	1380950	Slinger	3	87	2289208	Complete pump head	$\circ \bullet$ 1
27	600180	O-Ring $\phi 7.66 \times 1.78$	3	88	2289209	Complete pump head	\blacktriangle 1
28	1380920	Guiding piston	3	89	2289221	Complete pump head	$\square \blacktriangle \blacklozenge \boxtimes$ 1
29	1380060	Piston pin	3	86	1260250	Oil sight glass	1
30	1383020	Con rod - Bronze	3	87	1260430	Snap ring	1
31	1383050	Con rod - Aluminum	3	88	1780690	Contrast disc	1
32	1780510	O-Ring	1	89	1140450	O-Ring $\phi 20.24 \times 2.62$	1
33	1789010	Complete cover	1				
34	1343510	Bolt M6x14 (89 in/lbs)	6				
					AR64516	Oil	1

OIL CAPACITY - 15 OZ

