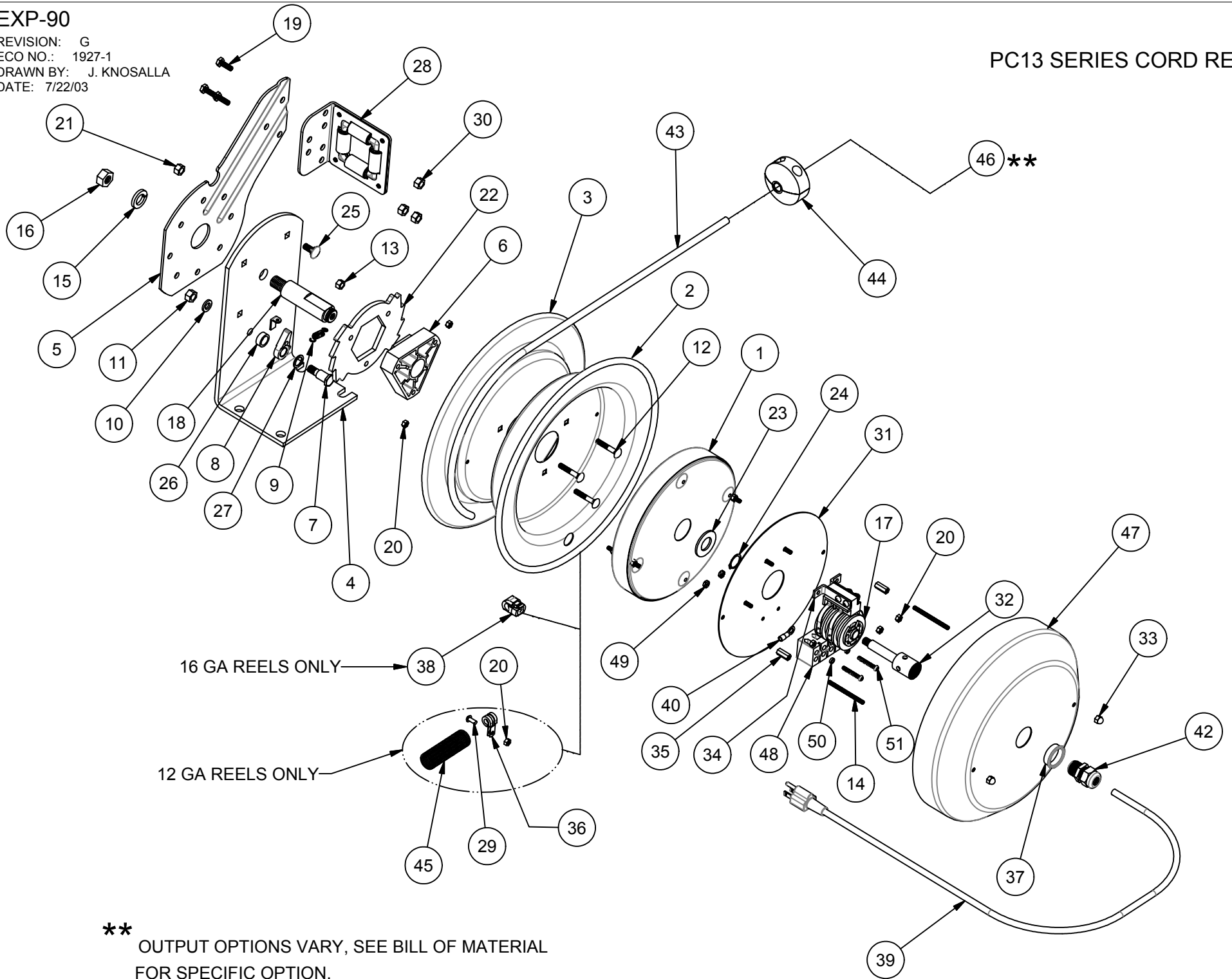


EXP-90

REVISION: G
ECO NO.: 1927-1
DRAWN BY: J. KNOSALLA
DATE: 7/22/03

PC13 SERIES CORD REELS



COMMON PARTS TO ALL PC13 SERIES REELS

ITEM NO.	PART NO.	DESCRIPTION	QTY REQ'D
3	140-1	DISC, 13" REEL	1
4	1954	BASE, 13" REEL	1
5	1732-1	ARM, GUIDE, 13"	1
6	1776-3	ASSY, HUB BEARING, 1"	1
7	1620	BOLT, SHOULDER, 1/2" X 1-1/2"	1
8	640-1-SS	CAM, LOCKING	1
9	274-1-SS	SPRING, DOG	1
10	437	WASHER, LOCK, 3/8"	1
11	184	NUT, JAM, 3/8-16	1
12	1953	BOLT, CARRIAGE, 1/4-20 X 1-1/2"	3
13	125	NUT, KEPS, 1/4-20	3
14	7197	STUD, THREADED, 10-32 X 3"	2
15	438	WASHER, LOCK, 5/8"	1
16	3584	NUT, 5/8-11	1
18	1956	AXLE, 1"	1
19	312	BOLT, 5/16-18	3
20	130	NUT, KEPS, 10-32	5
21	111-1	NUT, LOCK, 5/16-18 (LOW PROF)	4
22	1924	LOCKING RING	1

ITEM NO.	PART NO.	DESCRIPTION	QTY REQ'D
23	1755-1	WASHER, SPACER	1
24	1753	RETAINING RING (5160-75)	1
25	10220-75	BOLT, CARRIAGE, 5/16-18x3/4"	4
26	6440-SS	WASHER, SPACER	1
27	6441-1	WASHER, PLASTIC	1
28	1728-2	ASSY, ROLLER BRACKET	1
30	111	NUT, LOCK, 5/16-18	3
31	7166	ELECTRICAL MOUNTING PLATE	1
32	7161	INLET PORT	1
33	7196	NUT, ACORN, 10-32	2
34	7160	GUIDE SUPPORT, BRUSH CONTACT	2
35	7163	NUT, COUPLING, 10-32 X 3/4"	2
37	7167-1	BUSHING, OPEN, PLASTIC	1
* 44	131	BALL STOP	1
* 47	7162	COVER, 13"	1
** 48	8284	TERMINAL BLOCK	1
** 49	10137	NUT, KEPS, 8-32	2
** 50	8286	SPACER, NYLON	2
** 51	8285	SCREW, 8-32 X 1-1/4" LG.	2

ITEM NUMBER

MODEL NO.	ITEM NUMBER													ACCESSORY ITEM	
	1	2	17	29	36	38	* 39	40	* 41	42	* 43	* 45	* 46		
	SPRING	DISC	SLIP RING	SCREW (2)	CABLE CL (2)	BUSHING 90°	INPUT CABLE	TERMINAL RING	WIRE NUT (5)	STRAIN RELIEF	CABLE (FT)	CABLE GUARD			
PC13-3516-A	1959-5	7191	7155			7169-2	7198	7175-1	7176-1	7168-1			7188-1	RECEPTICAL, SINGLE, MOLDED, 35'	
PC13-5016-A	1959-8	7191	7155			7169-2	7198	7175-1	7176-1	7168-1			7188-2	RECEPTICAL, SINGLE, MOLDED, 50'	
PC13-3516-C	1959-5	7191	7155			7169-2	7247	7175-1	7176-1	7168-1			7208-1	TUBE LIGHT, FLOURESCENT, 35'	
PC13-5016-C	1959-8	7191	7155			7169-2	7247	7175-1	7176-1	7168-1			7208-2	TUBE LIGHT, FLOURESCENT, 50'	
PC13-3516-D	1959-5	7191	7155			7169-2	7198	7175-1	7176-1	7168-1			7207-1	ANGLE LIGHT, FLOURESCENT, 35'	
PC13-5016-D	1959-8	7191	7155			7169-2	7198	7175-1	7176-1	7168-1			7207-2	ANGLE LIGHT, FLOURESCENT, 50'	
PC13-3516-E	1959-5	7191	7155			7169-2	7198	7175-1	7176-1	7168-1			7206-1	CAGED LIGHT, INCANDESCENT, 35'	
PC13-5016-E	1959-8	7191	7155			7169-2	7198	7175-1	7176-1	7168-1			7206-2	CAGED LIGHT, INCANDESCENT, 50'	
PC13-3516-F	1959-5	7191	7155			7169-2	7198	7175-1	7176-1	7168-1	7172-16		7205-1	RECEPTICAL, DUPLEX, GFCI, 15 AMP	
PC13-5016-F	1959-8	7191	7155			7169-2	7198	7175-1	7176-1	7168-1	7172-16		7205-1	RECEPTICAL, DUPLEX, GFCI, 15 AMP	
PC13-3516-X	1959-5	7191	7155			7169-2	7198	7175-1	7176-1	7168-1	7172-16			NONE	
PC13-5016-X	1959-8	7191	7155			7169-2	7198	7175-1	7176-1	7168-1	7172-16			NONE	
PC13L-3516	1959-5	7191	7155			7169-2		7175-1		7168-1				NONE	
PC13L-5016	1959-8	7191	7155			7169-2		7175-1		7168-1				NONE	
PC13-3516-4	1959-5	7191-1	7156			7169-3	7173-16	7175-1	7176-1	7168-2	7173-16			NONE	
PC13-5016-4	1959-8	7191-1	7156			7169-3	7173-16	7175-1	7176-1	7168-2	7173-16			NONE	
PC13-3512-A	1960-1	7192	7155	245	7199		7174-2	7175-2	7176-2	7168-2	7172-12	237-2	7215-2	RECEPTICAL, SINGLE, 20 AMP	
PC13-5012-A	1960	7192	7155	245	7199		7174-2	7175-2	7176-2	7168-2	7172-12	237-2	7215-2	RECEPTICAL, SINGLE, 20 AMP	
PC13-3512-B	1960-1	7192	7155	245	7199		7174-2	7175-2 (4)	7176-2	7168-2	7172-12	237-2	7203-2	RECEPTICAL, QUAD BOX, 20 AMP	
PC13-5012-B	1960	7192	7155	245	7199		7174-2	7175-2 (4)	7176-2	7168-2	7172-12	237-2	7203-2	RECEPTICAL, QUAD BOX, 20 AMP	
PC13-3512-F	1960-1	7192	7155	245	7199		7174-2	7175-2 (4)	7176-2	7168-2	7172-12	237-2	7205-2	RECEPTICAL, DUPLEX, GFCI, 20 AMP	
PC13-5012-F	1960	7192	7155	245	7199		7174-2	7175-2 (4)	7176-2	7168-2	7172-12	237-2	7205-2	RECEPTICAL, DUPLEX, GFCI, 20 AMP	
PC13-3512-X	1960-1	7192	7155	245	7199		7174-2	7175-2	7176-2	7168-2	7172-12	237-2		NONE	
PC13-5012-X	1960	7192	7155	245	7199		7174-2	7175-2	7176-2	7168-2	7172-12	237-2		NONE	
PC13L-3512	1960-1	7192	7155	245	7199			7175-2		7168-2		237-2		NONE	
PC13L-5012	1960	7192	7155	245	7199			7175-2		7168-2		237-2		NONE	
PC13-3512-4	1960-1	7192	7156	245	7199		7173-12	7175-2	7176-2	7168-3	7173-12	237-2		NONE	
PC13-5012-4	1960	7192	7156	245	7199		7173-12	7175-2	7176-2	7168-3	7173-12	237-2		NONE	

ACCESSORIES

A - SINGLE IND. RECEPTICAL B - QUAD BOX IND. RECEPTICAL C - FLOURESCENT TUBE LIGHT D - FLOURESCENT ANGLE LIGHT E - CAGED INCANDESCENT LIGHT F - DUPLEX RECEPTICAL, GFCI X - NONE 4 - FOUR WIRE CABLE READY

* ON "LESS CABLE" MODELS (PC13L-) EXCLUDE ITEMS #39, #41, #43, #44, #45 AND #46

** ON "LESS CABLE" MODELS (PC13L-) INCLUDE ITEMS #48, #49, #50, AND #51

REEL ASSEMBLY REPORTS: R100 (LATCHOUT REMOVAL), R101 (LOCKING RING PLACEMENT), R112 (TIGHTENING AND TORQU OPERATING INST #028 (CORD INSTALLATION PROCEDURE)

REVISION: G

ECO: 1927-1

DATE: 7/23/03

NAME: J. KNOSALLA