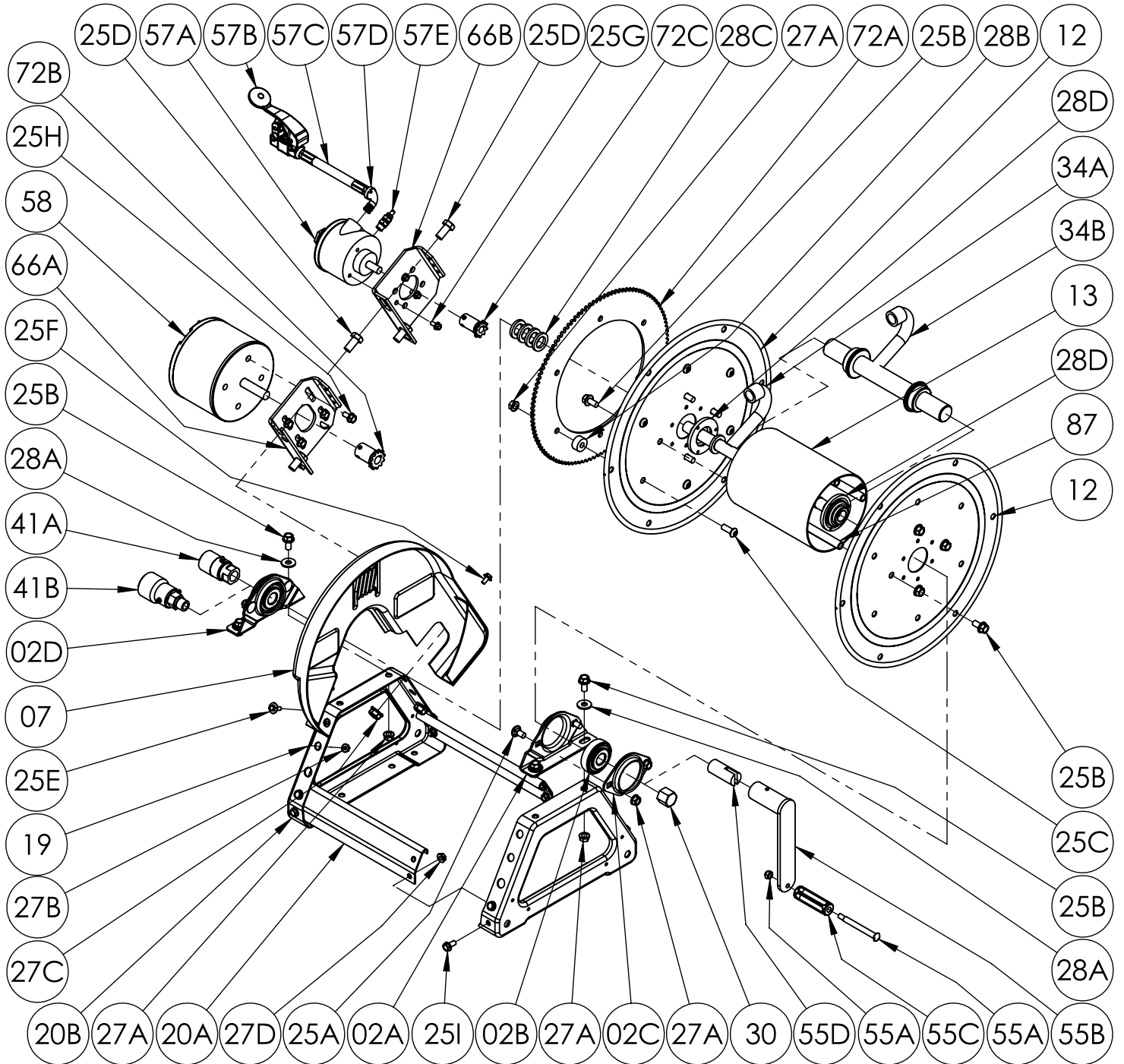


**ISO 90**  
**PARTS LIST**  
**SERIES 1500**  
**Power Rewind**



**PARTS LIST**  
**ISO 90**  
**SERIES 1500 - POWER REWIND**

When ordering parts

**BE SURE TO SPECIFY COMPLETE MODEL NUMBER and SERIAL NUMBER OF REEL.**

**USE PART NUMBER!**

Item No.	Description	PART NUMBER	Quantity
02A	Self Aligning Bearing Pillow Block (Steel E-Coated).....	9902.2900	2
02B	1/2" Self Aligning Bearing Insert Plated .....	9902.1300	2
02C	Self Aligning Bearing Holder (Steel E-Coated) .....	9902.2800	2
02D	1/2" S.A. Bearing Complete (Inc. 02A, 02B, 02C, 25A and 27A).....	9902.1200	2
02E	1" Self Aligning Bearing Insert Plated (EFH1500 Only) (Not Shown).....	9902.1500	2
02F	1" S.A. Bearing (Inc. 02A, 02C, 02E, 25A and 27A) (EFH1500 Only) (Not Shown)	9902.1400	2
06	#35 Chain- 116 Links (43-1/2" Long) w/ Connecting Link (Not Shown).....	9912.0028	1
07	Molded Chain Guard for Motor on Left, per P07A-00190 .....	9957.0030	1
07	Molded Chain Guard for Motor on Right, per P07A-00200 (Not Shown).....	9957.0031	1
12	(17-18) 16-1/2" Dia. Disc for 1500 Series .....	9903.0516	2
13	6" Dia. Aluminum Drum (Specify Model) .....	9905.7112	1
19	Trapezoid Frame Assembly (Specify Model) (Steel E-Coated) .....	9908.1000	1
20A	1500 Style Foot Stock (Specify Model) (Steel E-Coated) .....	9907.6000	2
20B	1500/4000 Series Trapezoid Side Frame (Steel E-Coated) .....	9906.0011	2
25A	3/8"-16 x 3/4" Carriage Bolt (For Bearings).....	9904.0201	4
25B	3/8"-16 x 3/4" Spinlock Bolt .....	9904.2201	12
25C	3/8"-16 x 1" Socket Head Cap Screw (For Sprocket) .....	9904.9202	6
25D	1/2"-13 x 1" Hex Head Bolt (For Motorplates).....	9904.1402	2
25E	1/4"-20 x 3/4" Hex Washer Head Black Zinc Screw (For Chainguard) .....	9904.1071	2
25F	1/4"-20 x 1/2" Hex Washer Head Tap Tight Screw (For Chainguard) .....	9904.1070	2
25I	5/16"-18 x 5/8" Hex Head Flanged Bolt (For Frame Ass'y).....	9904.1159	8
27A	3/8"-16 Spinlock Nut .....	9904.6200	14
27B	1/4"-20 Small Flange Spinlock Nut (For Chainguard) .....	9904.6000	2
27C	1/2"-13 Spin Lock Nut (For Motorplate).....	9904.5400	2
27D	5/16"-18 Hex Top Lock Nut (For Frame Ass'y) .....	9904.5602	8
28A	3/8" Flat Washer .....	9954.0007	4
28B	Sprocket Spacer (1" O.D. x 0.381" I.D. x 1/2" Thick) .....	9954.0015	6
28C	1/2" Hub Spacer, 3/16" Thick (Plastic) .....	9954.0020	4
28D	1500 Disc Washer for 1/2" Hub .....	9965.0040	2
28E	1" Hub Spacer, 1/8" Thick (Plastic) (EFH1500 Only) (Not Shown).....	9954.0021	As Req'd
30	1/2" Hub Pipe Cap for 1500 Series .....	9965.0013	1
34A	1/2" Welded Iron Pipe Hub (Specify Model and Fittings) .....	9901.0610	1
34A	1/2" Welded 304 SS Hub (Specify Model and Fittings) (EFL1500 Only) .....	9901.0604	1
34B	1/2" Welded 304 SS Barstock Hub (Specify Model and Fittings) (EFH1500 Only)	9901.0634	1
41A	1/2" 90 Deg FxF Steel 5000 PSI Super Swivel Jt (AFLAS Seals) .....	9927.8551	1
41A	1/2" 90 Degree FxF 3,000 PSI Oxygen Super Swivel Jt (Viton Seals) (EFL1500)	9927.8537	1
41B	1/2" 90 Degree MxF 6,000 PSI Oxygen Super Swivel Jt (Viton Seals) (EFH1500)	9927.8177	1
72A	112T35 x 13-3/8" Dia. Disc Sprocket (Steel E-Coated) .....	9910.1321	1
87	Anodized Threaded Spacer Pipe .....	Spec Model	4
<b>Optional Removable Direct Crank Rewind</b>			
55A	3/8" Shoulder Bolt with Nut.....	9914.0511	1
55B	Removable Hand Crank (Includes 55A & 55C).....	9914.0012	1
55C	Black Plastic Handle .....	9914.0506	1
55D	1/2" Adaptor for Removable Hand Crank on 1500 Series .....	9914.0053	1
<b>Electric Motor Only Parts</b>			
25H	5/16"-18 x 5/8" Spinlock Bolt (For Electric Motor) .....	9904.2159	4
58	AN-239 12V DC Face Mount 1/5 HP 420 RPM Motor.....	9915.0040	1
58	AN-227 12V DC Face Mount 1/3 HP 650 RPM Motor (Optional) .....	9915.0042	1
58	AN-250 12V DC Face Mount 1/12 HP 220 RPM Motor (Optional) .....	9915.0044	1
66A	Electric Motor Mounting Plate for Trapezoid Frame w/ 25H (Steel E-Coated) .	9923.0006	1
72B	11T35 x 1-3/4" Motor Sprocket for Electric Motor .....	9910.1119	1
<b>Air Motor Only Parts</b>			
25G	1/4"-20 x 1/2" Spinlock Bolt (For Air Motor) .....	9904.1058	3
57A	#4 AM Gast Air Motor (4 AM NRV-143) w/ Speed Control Muffler (57E) .....	9918.1122	1
57B	#3420 Schrader Valve for #4 AM Air Motor .....	9919.0004	1
57C	1/4" MxM NPT x 18" Long Air Hose .....	9919.0007	1
57D	1/4" MxF 90 Degree Street Elbow for #4 AM Air Motor .....	9950.0013	1
57E	1/4" MNPT Speed Control Muffler for #4 AM Air Motor .....	9919.0006	1
66B	Air Motor Mounting Plate for Trapezoid Frame w/ 25G (Steel E-Coated) .....	9923.0013	1
72C	9T35 x 1-3/4" Motor Sprocket for Air Motor .....	9910.1015	1