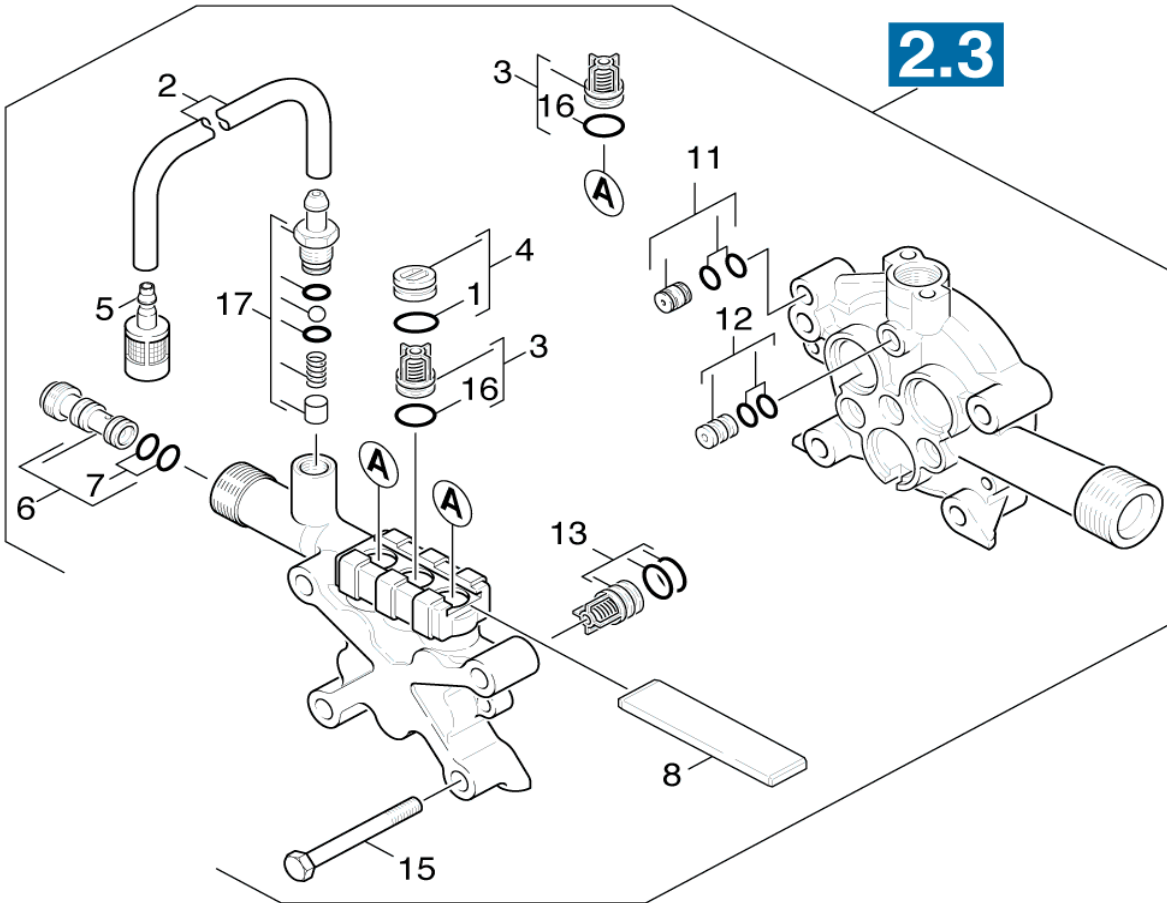


# PUMP BREAKDOWN FOR K2400HH (1.194-301.0)

13-Dec-10

Location	PN	DESCRIPTION	QTY
<b>PUMP SET - Cylinder Head 2.1</b>			
	8920-0040	Complete Replacement Pump (Alternative)	1
1	6363-2730	O-Ring Seal 11.0x2.0	3
2	9162-1010	Detergent Suction Hose 36" DN5	3
3*	2884-8720	Valve (3 Pack)	1
4*	4132-0070	Drain Plug (w/O-Ring)	3
5	4862-0320	Filter Chemistry Regulation	1
6	4769-0320	Nozzle Insert w/O-Rings	1
7*	6362-3840	O-Ring Seal 9.0x1.5	2
8	5003-0620	Plate	1
11*	4030-1090	Throttle Complete (w/O-Rings)	1
11A	6362-1760	O-Rings 6.07x1.78	2
12*	4030-1090	Joining Piece (w/O-Rings)	1
12A	6362-1760	O-Rings 6.07x1.78	2
13*	4580-3300	Valve	3
15	7304-0970	Hexagonal Head Screw M8-70-8.8	4
17	2883-8620	Detergent Inlet Assembly (Spart Parts Kit)	1
17A	5443-4480	Chemistry Inlet Nipple	1
17B	6362-4510	O-Ring Seal 8.0x1.0	1
17C	6362-1750	O-Ring Seal 5.28x1.78	1
17D	7401-9090	Ball	1
17E	5332-2580	Spring	1
17F	5110-7140	Sleeve	1
100*	2884-2140A	Rebuild Kit (Spare Parts Kit)	1

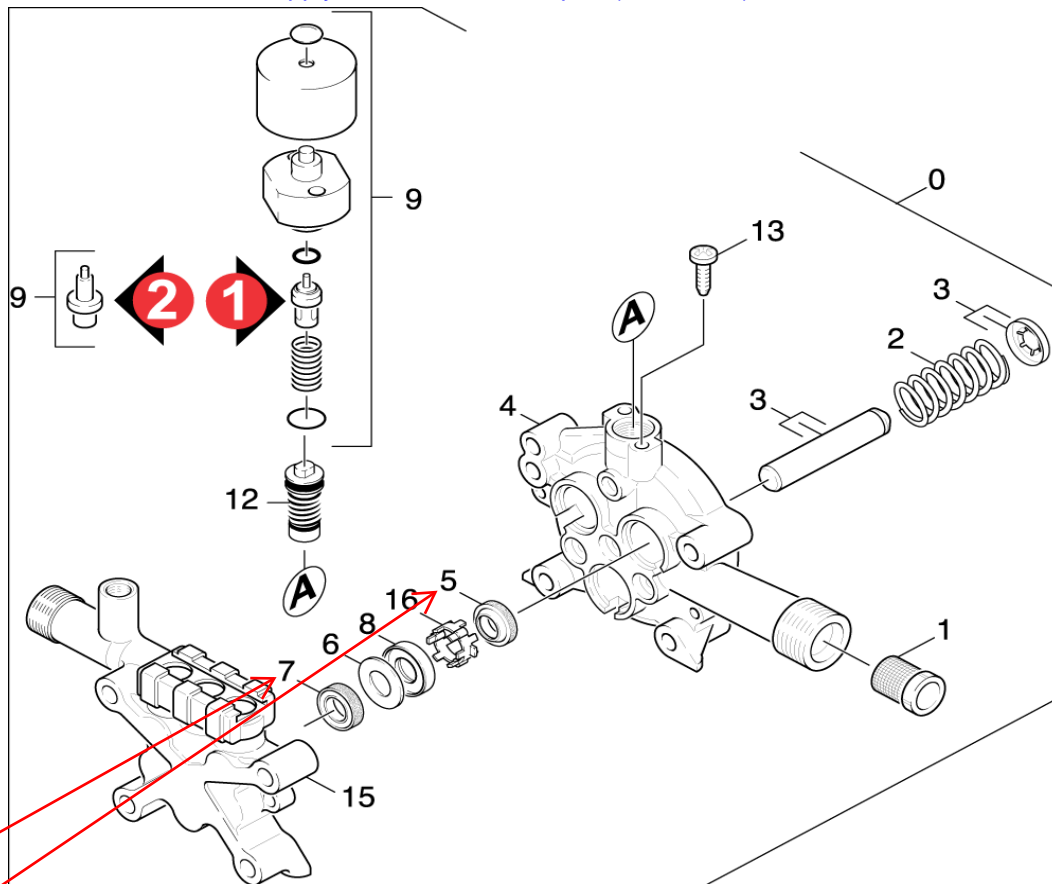
G2401OH (v1)	1194-5050
G2500HT (v1)	1194-3070
G2500OH (v1)	1194-5120
G2600OH (v1)	1194-5000
G2600OR (v1)	1194-5080
G2650HH (v1)	1194-5060
G2650OH (v1)	1194-5130
HD2500HK (v1)	1194-1150
K2300G (v1)	1194-1100
K2400HB (v1)	1194-3030
<b>K2400HH (v1)</b>	<b>1194-3010</b>
K2400HHca (v1)	1194-3040
K2401HH (v1)	1194-3050
K5800GHca (v1)	1194-1060
K6000GHca (v1)	1194-1090



# PUMP BREAKDOWN FOR K2400HH (1.194-301.0)

13-Dec-10

Location	PN	DESCRIPTION	QTY
<b>PUMP SET - Piston Guidance 2.2</b>			
0	8920-0040	Complete Replacement Pump (Alternative)	1
1	6414-2520	Inlet Filter	1
2	5332-3910	Piston Pressure Spring	3
3	4553-1730	Piston	3
3A	5115-9160	Piston Retainer Clip / Lock Washer	3
4%	5061-0820	Piston Guidance	1
5*%	0636-5393	Grooved Ring / Oil Seal 12x20x4/6	3
6*	5115-7210	Teflon Washer	3
7*	6365-3940	Grooved Ring / Water Seal 12x20x5.3/2.8	3
8*	5115-7200	Brass Washer	3
9	4580-3440	Thermal Valve Assembly (version 1)	1
9%	4580-3590	Thermal Valve Assembly (version 2)	1
9A	6413-1140	Thermal Valve 60 (version 2)	1
9B	7362-5070	O-Ring Seal 8.0x2.0	1
9C	6362-5530	O-Ring Seal 14.0x1.1	1
9D	5587-1960	Valve Housing	1
9E	5394-5220	Protecting Cap	1
9F	6343-1290	Lock Washer	1
9G	5332-2900	Helical Spring	1
12*%	4591-0400	Unloader (Spill) Valve	1
13%	7303-0660	Screw M6x30	2
15	5550-2940	Cylinder Head	1
16*	5110-7070	Sleeve	3
100%	4060-5880	<b>Retrofit Kit</b>	1
	9154-0090	Water Supply Hose Swivel / Coupler (not shown)	1

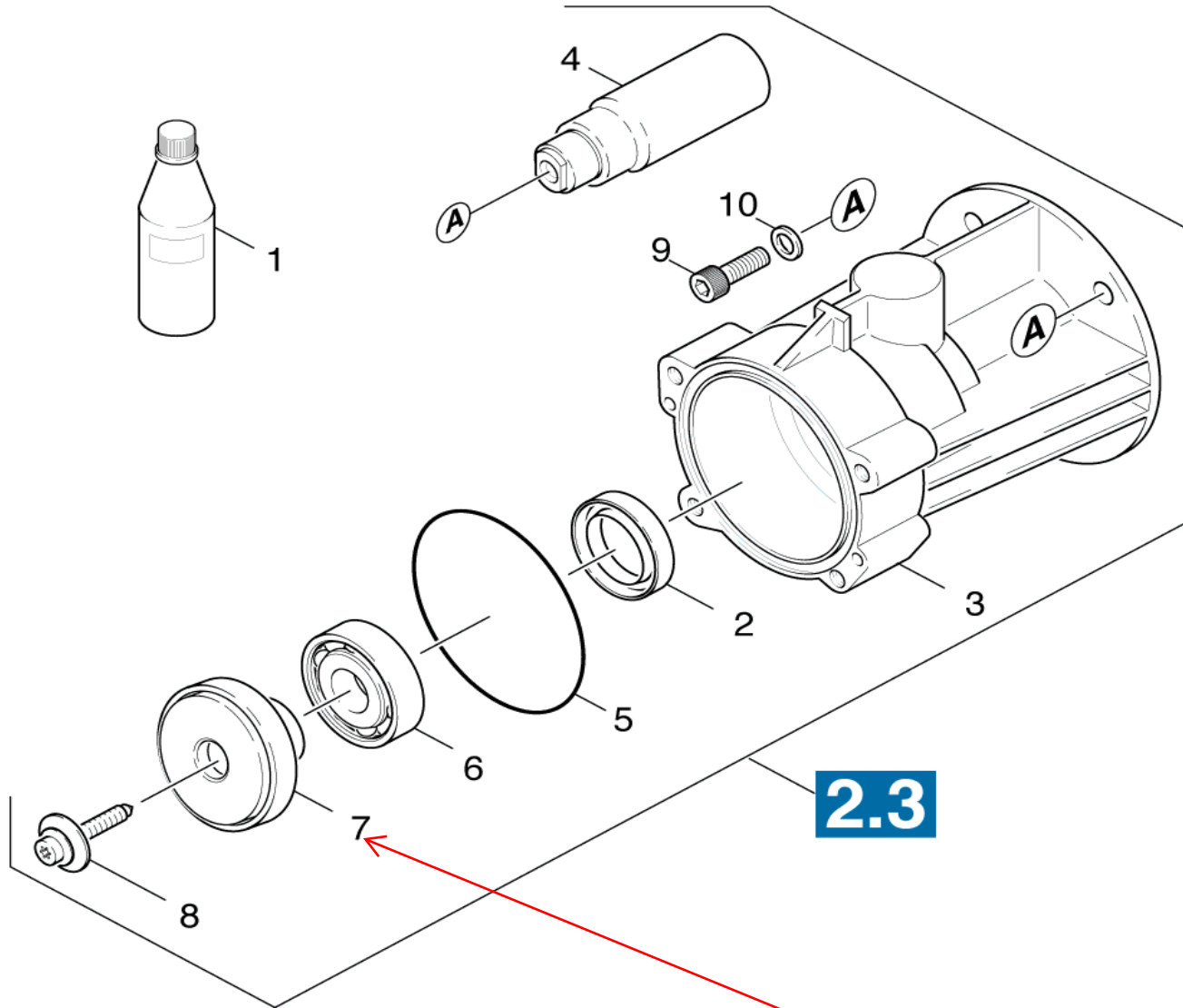


- #7 Water Seal (Grooved Ring) Grooved Side in toward brass section #15  
Smooth Side facing out toward #6 washer
- #5 Oil Seal (Grooved Ring) Grooved Side in toward aluminum section #4  
Tapered Side facing out toward #16 plastic sleeve

# PUMP BREAKDOWN FOR K2400HH (1.194-301.0)

13-Dec-10

Location	PN	DESCRIPTION	QTY
<b>MOTOR - Actuation (Transmission) 3.2</b>			
1	6288-0500	Oil 1 Litre (15w-40)	1
2	7367-0180	Radial Shaft Seal Ring A46x37x7	1
3	5090-1060	Pump Housing (Horizontal)	1
4	5471-0880	Coupling Element	1
<b>5*</b>	<b>6362-4710</b>	<b>O-Ring Seal 80.0x3.0</b>	<b>1</b>
6	7401-1550	Axial Ball Bearing	1
7	6401-2890	Swash Plate	1
8	6304-0480	Cylinder Head Screw M6-19	1
9	6965-0070	Bolt 5/16-24x1 Gr 5	4
10	5115-6560	5/16" Split Lock Washer Zinc	4
	9194-5460	Shaft Key 3/16" Sq x 1.5" L (not shown)	1



**Pump Oil (#1) - 15W-40**

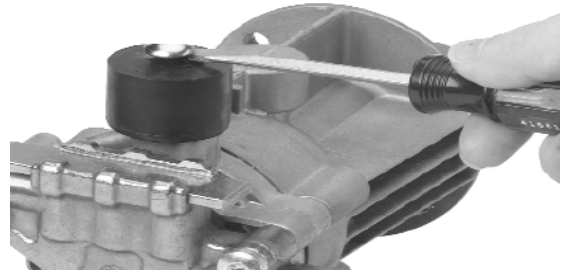
3.5 ounces or fill to top of Swash Plate (part #7) (angled washer that covers bearing ring)



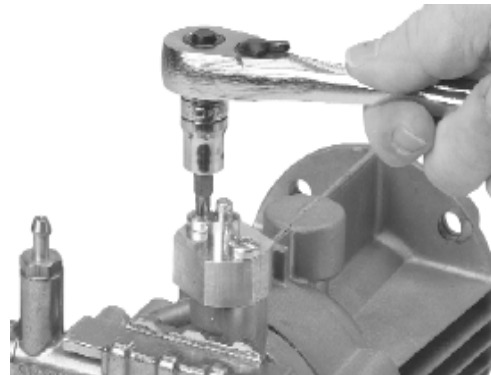
## How to properly remove, replace and lubricate the Spill (Unloader) Valve, Part no. 4591-0400 for Pump (3.532-629.0)

Remove the entire pump assembly by removing the 4- 3/16" Allen bolts that mount the pump to the engine. **Do not remove** the 4-6mm hex bolts at the **front of the pump**. Removing these bolts will cause **oil to leak** from the pump.

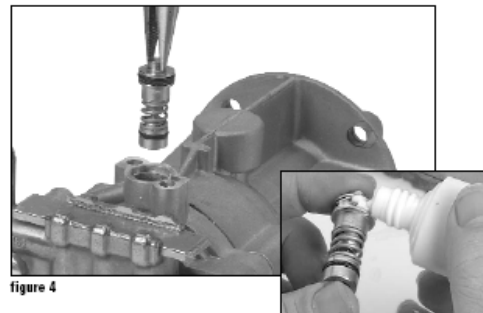
The Spill valve is located under the black plastic cap with the silver button on top. Remove the little silver cap with a standard screwdriver and then remove the black plastic cap.



Remove the Thermal valve by removing the 2 screws from the white housing. The screws are either Philips or Torx T30. Pull the white plastic housing from the pump, then remove the spring and brass needle.



Remove the spill valve by grasping the knob at the top of the spill valve with a needle-nose vice grip and pulling straight up. The spill valve is seated in the housing with an o-ring so there will be a slight resistance.



When the spill valve is removed use a damp cloth to clean the valve and verify that there are no cuts, tears, or damage to the o-rings. If possible clean and inspect the bore in the housing for pits or build up. (There is also a new K Retro Fit Kit available that has an anodized piston guide housing Part no. 4060-5880 that prevents build up.

Next lubricate the top **green** o-ring or o-rings of the spill valve generously with silicone grease; **DO NOT LUBRICATE THE LOWER O-RING**. Reinstall the valve and make sure that it is seated all the way to the bottom.

### R.J. BOWERS DISTRIBUTORS INC.

2003 Harrison Av  
Rockford, IL 61104

WEB: [www.rjbowers.com](http://www.rjbowers.com)

800-383-6584

FAX: 815-399-8839

e-mail: [parts@rjbowers.com](mailto:parts@rjbowers.com)

# VALVE & WATER SEAL ASSEMBLY



1) Valve w/1 o-ring, valve w/2 o-ring & grooved ring (water seal)



2) Place valve w/1 o-ring in brass cylinder head body, cap/o-ring end in first



3) Valve installed



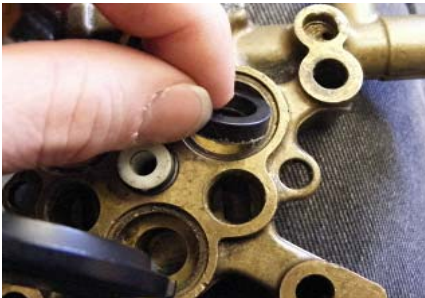
4) Place valve w/2 o-rings in brass cylinder head body, cage end down



5) Valve installed



6) All 3 valves installed



7) Grooved Ring (HP seal, water seal) grooved side down, smooth side up



8) Valve & Grooved Ring in place



9) Cylinder Head w/valves installed w/Piston Guidance



10) Mating Brass Cylinder Head with metal Piston Guidance



11) Closer showing